

Kiss1 antibody

Cat. No. GTX37642

Host	Rabbit
Clonality	Polyclonal
Isotype	IgG
Application	IHC-P, IHC
Reactivity	Human, Mouse, Rat, Goat

Reference (3)
Package
100 µg

APPLICATION

Application Note

*Optimal dilutions/concentrations should be determined by the researcher.

Suggested dilution	Recommended dilution
IHC-P	1:400-800
IHC	Assay dependent

Not tested in other applications.

Calculated MW 15 kDa. ([Note](#))

PROPERTIES

Form	Liquid
Buffer	10mM TBS, 0.5% BSA, 25% Glycerol
Preservative	0.015% ProClin 300
Storage	Store as concentrated solution. Centrifuge briefly prior to opening vial. For short-term storage (1-2 weeks), store at 4°C. For long-term storage, aliquot and store at -20°C or below. Avoid multiple freeze-thaw cycles.
Concentration	0.5 mg/ml (Please refer to the vial label for the specific concentration.)
Immunogen	KLH conjugated synthetic peptide derived from human Kiss-1:81-145/145AA
Purification	Protein A purified
Conjugation	Unconjugated

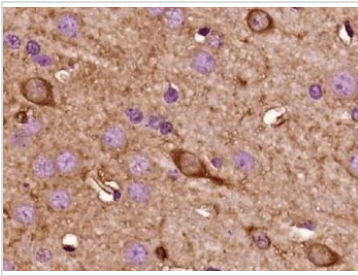
Note

For laboratory research use only. Not for any clinical, therapeutic, or diagnostic use in humans or animals. Not for animal or human consumption.

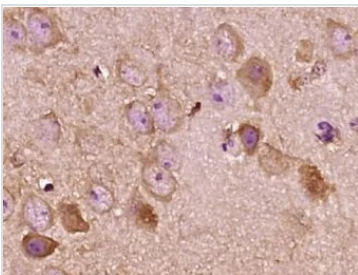
Purchasers shall not, and agree not to enable third parties to, analyze, copy, reverse engineer or otherwise attempt to determine the structure or sequence of the product.



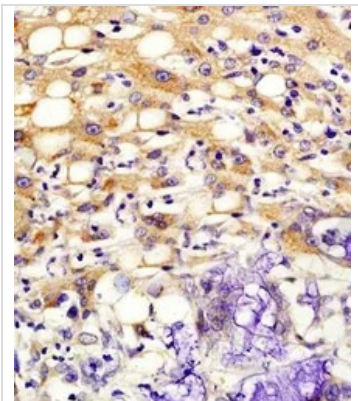
For full product information, images and publications, please visit our [website](#).

DATA IMAGES

GTX37642 IHC-P Image

IHC-P analysis of rat brain tissue using GTX37642 Kiss1 antibody.


GTX37642 IHC-P Image

IHC-P analysis of mouse brain tissue using GTX37642 Kiss1 antibody.


GTX37642 IHC-P Image

IHC-P analysis of human colon carcinoma tissue using GTX37642 Kiss1 antibody.



For full product information, images and publications, please visit our [website](#).