

## GM-CSF Receptor alpha antibody

Cat. No. GTX37684

Host	Rabbit
Clonality	Polyclonal
Isotype	IgG
Applications	ICC/IF, IHC-P, IHC-Fr
Reactivity	Human, Mouse, Rat

References ( 1 )

Package

100 µg

## Applications

## Application Note

\*Optimal dilutions/concentrations should be determined by the researcher.

Suggested dilution	Recommended dilution
ICC/IF	1:100-500
IHC-P	1:400-800
IHC-Fr	Assay dependent

Not tested in other applications.

## Properties

Form	Liquid
Buffer	10mM TBS, 0.5% BSA, 25% Glycerol
Preservative	0.015% ProClin 300
Storage	Store as concentrated solution. Centrifuge briefly prior to opening vial. For short-term storage (1-2 weeks), store at 4°C. For long-term storage, aliquot and store at -20°C or below. Avoid multiple freeze-thaw cycles.
Concentration	0.5 mg/ml (Please refer to the vial label for the specific concentration.)
Immunogen	KLH conjugated synthetic peptide derived between 111-220 amino acids of human CD116
Purification	Protein A purified
Conjugation	Unconjugated

## Note

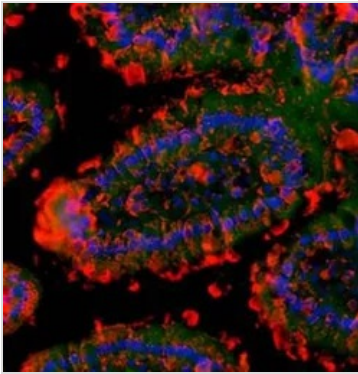
For laboratory research use only. Not for any clinical, therapeutic, or diagnostic use in humans or animals. Not for animal or human consumption.

Purchasers shall not, and agree not to enable third parties to, analyze, copy, reverse engineer or otherwise attempt to determine the structure or sequence of the product.



For full product information, images and publications, please visit our [website](#).

## DATA IMAGES

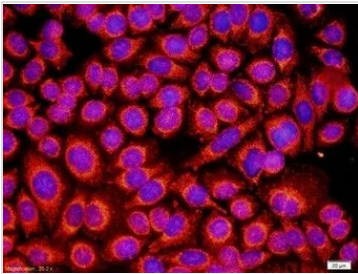


### GTx37684 IHC-P Image

IHC-P analysis of mouse intestine tissue using GTx37684 GM-CSF Receptor alpha antibody.

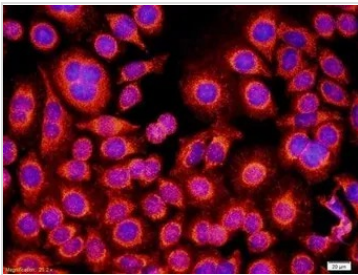
Fixation : 4% PFA

Antigen retrieval : boiling with citrate buffer



### GTx37684 IHC-Fr Image

IHC-Fr analysis of human cancerous bone marrow cells using GTx37684 GM-CSF Receptor alpha antibody.



### GTx37684 ICC/IF Image

ICC/IF analysis of human cancerous bone marrow cells using GTx37684 GM-CSF Receptor alpha antibody.

Dilution : 1:350



For full product information, images and publications, please visit our [website](#).