

EPO receptor antibody

Cat. No. GTX37704

Host	Rabbit
Clonality	Polyclonal
Isotype	IgG
Applications	WB, IHC-P, IHC-Fr
Reactivity	Human, Rat

References (3)

Package

100 µg

Applications

Application Note

*Optimal dilutions/concentrations should be determined by the researcher.

Suggested dilution	Recommended dilution
WB	1:200-1000
IHC-P	1:100-500
IHC-Fr	Assay dependent

Not tested in other applications.

Calculated MW 55 kDa. ([Note](#))

Properties

Form	Liquid
Buffer	PBS
Preservative	0.02% Sodium azide
Storage	Store as concentrated solution. Centrifuge briefly prior to opening vial. For short-term storage (1-2 weeks), store at 4°C. For long-term storage, aliquot and store at -20°C or below. Avoid multiple freeze-thaw cycles.
Concentration	0.5 mg/ml (Please refer to the vial label for the specific concentration.)
Immunogen	KLH conjugated synthetic peptide derived from human EPOR.
Purification	Purified by antigen-affinity chromatography
Conjugation	Unconjugated

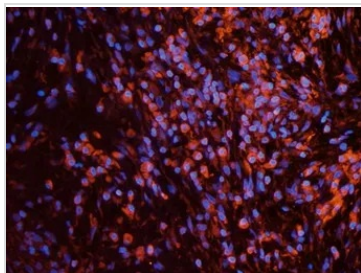
Note

For laboratory research use only. Not for any clinical, therapeutic, or diagnostic use in humans or animals. Not for animal or human consumption.

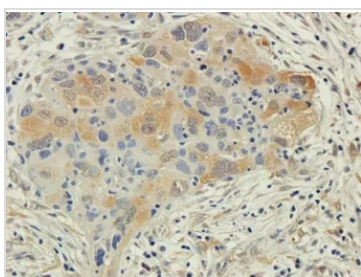
Purchasers shall not, and agree not to enable third parties to, analyze, copy, reverse engineer or otherwise attempt to determine the structure or sequence of the product.



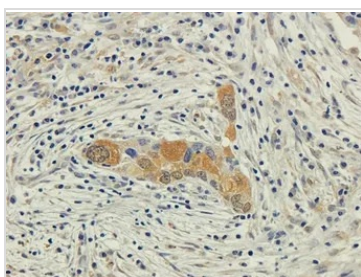
For full product information, images and publications, please visit our [website](#).

DATA IMAGES

GTX37704 IHC-Fr Image

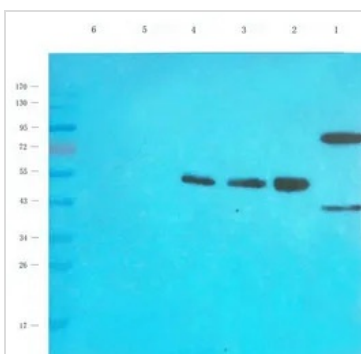
IHC-Fr analysis of human lung cancer tissue using GTX37704 EPO receptor antibody.
Dilution : 2.5µg/ml


GTX37704 IHC-P Image

IHC-P analysis of human lung cancer tissue using GTX37704 EPO receptor antibody.
Dilution : 2.5µg/ml


GTX37704 IHC-P Image

IHC-P analysis of human lung cancer tissue using GTX37704 EPO receptor antibody.
Dilution : 2.5µg/ml


GTX37704 WB Image

WB analysis of rat thyroid (Lane 1), human thyroid cancer (Lane 2), human breast cancer (Lane 3), human lung cancer (Lane 4), U251 cell (Lane 5) lysates using GTX37704 EPO receptor antibody.
Dilution : 1µg/ml



For full product information, images and publications, please visit our [website](https://www.genetex.com).