

# Casein antibody

**Cat. No. GTX37769**

<b>Host</b>	Rabbit
<b>Clonality</b>	Polyclonal
<b>Isotype</b>	IgG
<b>Applications</b>	WB, ICC/IF, IHC-P, ELISA
<b>Reactivity</b>	Bovine

References ( 4 )

Package

200 µl

## Applications

### Application Note

P-ELISA:1:500-1000, WB:1:100-500, IHC-P:1:100-500

## Properties

<b>Form</b>	Liquid
<b>Buffer</b>	PBS
<b>Preservative</b>	0.1% Sodium azide
<b>Storage</b>	Store as concentrated solution. Centrifuge briefly prior to opening vial. For short-term storage (1-2 weeks), store at 4°C. For long-term storage, aliquot and store at -20°C or below. Avoid multiple freeze-thaw cycles.
<b>Concentration</b>	0.13 mg/ml (Please refer to the vial label for the specific concentration.)
<b>Immunogen</b>	The immunogen used to generate this antibody corresponds to bovine Casein.
<b>Purification</b>	Purified by antigen-affinity chromatography.
<b>Conjugation</b>	Unconjugated

### Note

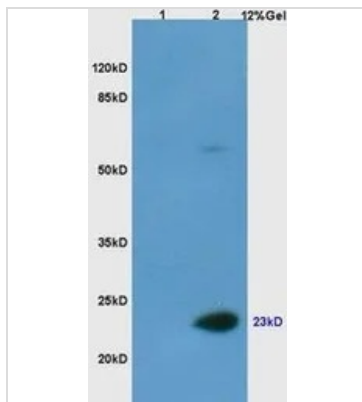
For laboratory research use only. Not for any clinical, therapeutic, or diagnostic use in humans or animals. Not for animal or human consumption.

Purchasers shall not, and agree not to enable third parties to, analyze, copy, reverse engineer or otherwise attempt to determine the structure or sequence of the product.



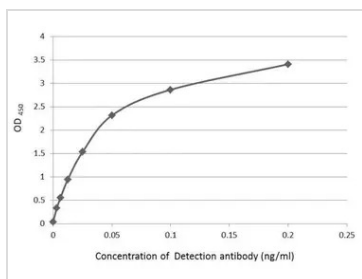
For full product information, images and publications, please visit our [website](#).

## DATA IMAGES



### GTX37769 WB Image

WB analysis of lysates from (1) mouse brain and (2) non-fat dry milk lysates (45ug per lane) using Casein antibody.



### GTX37769 ELISA Image

An ELISA plate is coated with 50  $\mu$ L of non-fat milk at 10  $\mu$ g/mL. The coated protein is detected with anti-Casein antibody (GTX37769) at concentration ranged from 0.2 to 0.03125 ng/mL.



For full product information, images and publications, please visit our [website](https://www.genetex.com).