

Beclin 1 antibody

Cat. No. GTX37770

Host	Rabbit
Clonality	Polyclonal
Isotype	IgG
Applications	WB, IHC-P, IHC-Fr
Reactivity	Human, Mouse, Rat

References (1)

Package

100 µg

Applications

Application Note

*Optimal dilutions/concentrations should be determined by the researcher.

Suggested dilution	Recommended dilution
WB	1:100-2000
IHC-P	1:100-600
IHC-Fr	Assay dependent

Not tested in other applications.

Calculated MW 52 kDa. ([Note](#))

Properties

Form	Liquid
Buffer	PBS
Preservative	0.02% Sodium azide
Storage	Store as concentrated solution. Centrifuge briefly prior to opening vial. For short-term storage (1-2 weeks), store at 4°C. For long-term storage, aliquot and store at -20°C or below. Avoid multiple freeze-thaw cycles.
Concentration	0.5 mg/ml (Please refer to the vial label for the specific concentration.)
Immunogen	KLH conjugated synthetic peptide derived from human Beclin 1.
Purification	Purified by antigen-affinity chromatography
Conjugation	Unconjugated

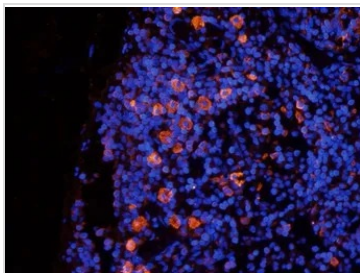
Note

For laboratory research use only. Not for any clinical, therapeutic, or diagnostic use in humans or animals. Not for animal or human consumption.

Purchasers shall not, and agree not to enable third parties to, analyze, copy, reverse engineer or otherwise attempt to determine the structure or sequence of the product.

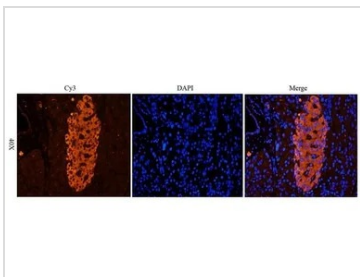


For full product information, images and publications, please visit our [website](#).

DATA IMAGES

GTX37770 IHC-Fr Image

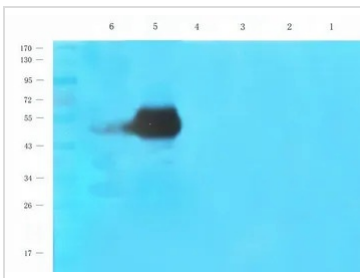
IHC-Fr analysis of rat lymph node tissue using GTX37770 Beclin 1 antibody.

Dilution : 2.5µg/ml


GTX37770 IHC-Fr Image

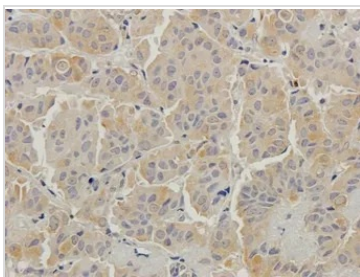
IHC-Fr analysis of rat pancreas tissue using GTX37770 Beclin 1 antibody.

Dilution : 2.5µg/ml


GTX37770 WB Image

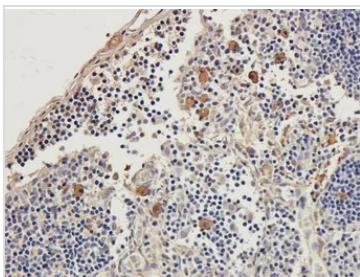
WB analysis of rat lymph node (Lane 1), mouse spinal cord (Lane 2), rat rectum (Lane 3), mouse testis (Lane 4), human breast cancer (Lane 5), rat pancreas (Lane 6) tissue lysates using GTX37770 Beclin 1 antibody.

Dilution : 1µg/ml


GTX37770 IHC-P Image

IHC-P analysis of human breast cancer tissue using GTX37770 Beclin 1 antibody.

Dilution : 2.5µg/ml


GTX37770 IHC-P Image

IHC-P analysis of rat lymph node tissue using GTX37770 Beclin 1 antibody.

Dilution : 2.5µg/ml



For full product information, images and publications, please visit our [website](https://www.genetex.com).