

WDR83 antibody

Cat. No. GTX38544

Host	Rabbit
Clonality	Polyclonal
Isotype	IgG
Applications	WB, IHC-P
Reactivity	Human, Rat

Package
50 µg

Applications

Application Note

*Optimal dilutions/concentrations should be determined by the researcher.

Suggested dilution	Recommended dilution
WB	Assay dependent
IHC-P	Assay dependent

Not tested in other applications.

Calculated MW 34 kDa. ([Note](#))

Properties

Form	Liquid
Buffer	0.001% Na ₂ HPO ₄ , 0.0045% NaCl, 0.025% BSA
Preservative	0.00025% Thimerosal, 0.00025% Sodium azide
Storage	Store as concentrated solution. Centrifuge briefly prior to opening vial. For short-term storage (1-2 weeks), store at 4°C. For long-term storage, aliquot and store at -20°C or below. Avoid multiple freeze-thaw cycles.
Concentration	Batch dependent (Please refer to the vial label for the specific concentration.)
Immunogen	A synthetic peptide corresponding to a sequence at the N-terminus of human WDR83(29-43aa RAVRFNVDGNYCLTC), identical to the related mouse and rat sequences.
Purification	Purified by antigen-affinity chromatography
Conjugation	Unconjugated

Note

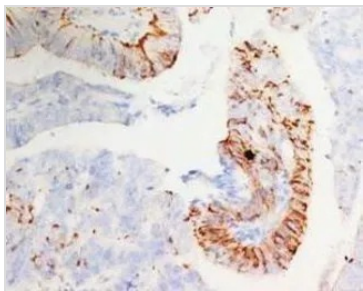
For laboratory research use only. Not for any clinical, therapeutic, or diagnostic use in humans or animals. Not for animal or human consumption.

Purchasers shall not, and agree not to enable third parties to, analyze, copy, reverse engineer or otherwise attempt to determine the structure or sequence of the product.



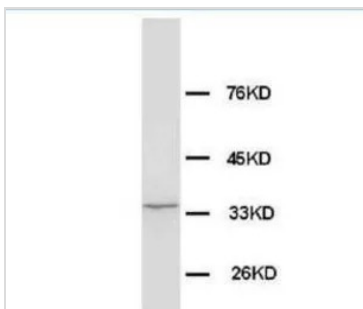
For full product information, images and publications, please visit our [website](#).

DATA IMAGES



GTX38544 IHC-P Image

IHC-P analysis of human mammary cancer tissue using GTX38544 WDR83 antibody.



GTX38544 WB Image

WB analysis of rat brain tissue lysate using GTX38544 WDR83 antibody.



For full product information, images and publications, please visit our [website](#).