

## API5 antibody

Cat. No. GTX38554

Host	Rabbit
Clonality	Polyclonal
Isotype	IgG
Applications	WB, IHC-P
Reactivity	Human, Rat

## Package

50 µg

## Applications

## Application Note

\*Optimal dilutions/concentrations should be determined by the researcher.

Suggested dilution	Recommended dilution
WB	Assay dependent
IHC-P	Assay dependent

Not tested in other applications.

Calculated MW 59 kDa. ( [Note](#) )

## Properties

Form	Liquid
Buffer	0.001% Na <sub>2</sub> HPO <sub>4</sub> , 0.0045% NaCl, 0.025% BSA
Preservative	0.00025% Thimerosal, 0.00025% Sodium azide
Storage	Store as concentrated solution. Centrifuge briefly prior to opening vial. For short-term storage (1-2 weeks), store at 4°C. For long-term storage, aliquot and store at -20°C or below. Avoid multiple freeze-thaw cycles.
Concentration	Batch dependent (Please refer to the vial label for the specific concentration.)
Immunogen	A synthetic peptide corresponding to a sequence at the C-terminus of human API5 (487-504aa KYSSNLGNFNYSRLQGK) (b), different from the related mouse sequence by one amino acid.
Purification	Purified by antigen-affinity chromatography
Conjugation	Unconjugated

## Note

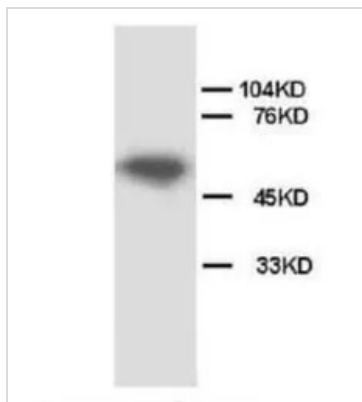
For laboratory research use only. Not for any clinical, therapeutic, or diagnostic use in humans or animals. Not for animal or human consumption.

Purchasers shall not, and agree not to enable third parties to, analyze, copy, reverse engineer or otherwise attempt to determine the structure or sequence of the product.



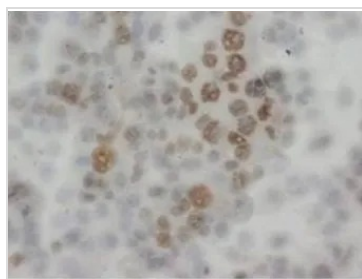
For full product information, images and publications, please visit our [website](#).

## DATA IMAGES



### GTX38554 WB Image

WB analysis of rat cardiac muscle tissue lysate using GTX38554 API5 antibody.



### GTX38554 IHC-P Image

IHC-P analysis of human epidermic carcinoma tissue using GTX38554 API5 antibody.



For full product information, images and publications, please visit our [website](https://www.genetex.com).