

PLCG2 (phospho Tyr753) antibody

Cat. No. GTX38559

Host	Rabbit
Clonality	Polyclonal
Isotype	IgG
Applications	WB, ICC/IF
Reactivity	Human

Package

50 µl

Applications

Application Note

*Optimal dilutions/concentrations should be determined by the researcher.

Suggested dilution	Recommended dilution
WB	1:500-1:1000
ICC/IF	1:100-1:200

Not tested in other applications.

Calculated MW	148 kDa. (Note)
Product Note	This antibody detects endogenous levels of PLC gamma 2 only when phosphorylated at tyrosine 753.

Properties

Form	Liquid
Buffer	PBS, 150mM NaCl, 50% Glycerol
Preservative	0.02% Sodium azide
Storage	Store as concentrated solution. Centrifuge briefly prior to opening vial. For short-term storage (1-2 weeks), store at 4°C. For long-term storage, aliquot and store at -20°C or below. Avoid multiple freeze-thaw cycles.
Concentration	1 mg/ml (Please refer to the vial label for the specific concentration.)
Immunogen	The antiserum was produced against synthesized phosphopeptide derived from human PLC gamma 2 around the phosphorylation site of tyrosine 753 (S -L-Y(p)-D-V).
Purification	Purified by antigen-affinity chromatography
Conjugation	Unconjugated

Note

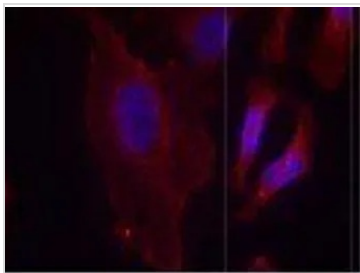
For laboratory research use only. Not for any clinical, therapeutic, or diagnostic use in humans or animals. Not for animal or human consumption.

Purchasers shall not, and agree not to enable third parties to, analyze, copy, reverse engineer or otherwise attempt to determine the structure or sequence of the product.



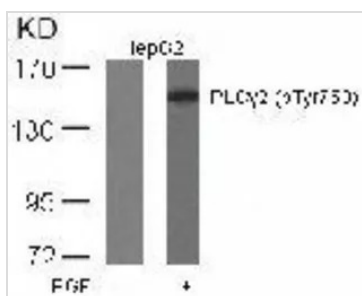
For full product information, images and publications, please visit our [website](#).

DATA IMAGES



GTX38559 ICC/IF Image

ICC/IF analysis of methanol-fixed HeLa cells using GTX38559 PLCG2 (phospho Tyr753) antibody.



GTX38559 WB Image

WB analysis of extracts of HepG2 cells treated or untreated with EGF using GTX38559 PLCG2 (phospho Tyr753) antibody.



For full product information, images and publications, please visit our [website](#).