

ZAP70 (phospho Tyr319) antibody

Cat. No. GTX38562

Host	Rabbit
Clonality	Polyclonal
Isotype	IgG
Applications	WB, ICC/IF
Reactivity	Human

Package

50 µl

Applications

Application Note

*Optimal dilutions/concentrations should be determined by the researcher.

Suggested dilution	Recommended dilution
WB	1:500-1:1000
ICC/IF	1:100-1:200

Not tested in other applications.

Calculated MW 70 kDa. ([Note](#))

Product Note ZAP70 (phospho-Tyr319) antibody detects endogenous levels of ZAP70 only when phosphorylated at tyrosine 319.

Properties

Form	Liquid
Buffer	PBS, 150mM NaCl, 50% Glycerol
Preservative	0.02% Sodium azide
Storage	Store as concentrated solution. Centrifuge briefly prior to opening vial. For short-term storage (1-2 weeks), store at 4°C. For long-term storage, aliquot and store at -20°C or below. Avoid multiple freeze-thaw cycles.
Concentration	1 mg/ml (Please refer to the vial label for the specific concentration.)
Immunogen	The antiserum was produced against synthesized phosphopeptide derived from human ZAP70 around the phosphorylation site of tyrosine 319 (S -P-Y(p)-S-D).
Purification	Purified by antigen-affinity chromatography
Conjugation	Unconjugated

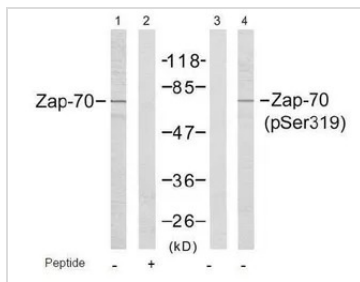
Note

For laboratory research use only. Not for any clinical, therapeutic, or diagnostic use in humans or animals. Not for animal or human consumption.

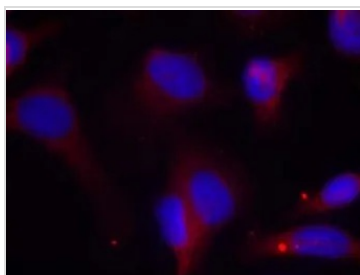
Purchasers shall not, and agree not to enable third parties to, analyze, copy, reverse engineer or otherwise attempt to determine the structure or sequence of the product.



For full product information, images and publications, please visit our [website](#).

DATA IMAGES

GTX38562 WB Image

WB analysis of Jurkat cell lysate using ZAP70 antibody (Lane 1 and 2) and GTX38562 ZAP70 (phospho Tyr319) antibody (Lane 3 and 4).


GTX38562 ICC/IF Image

ICC/IF analysis of methanol-fixed HeLa cells using GTX38562 ZAP70 (phospho Tyr319) antibody.
Red : Primary antibody



For full product information, images and publications, please visit our [website](https://www.genetex.com).