

VEGF Receptor 2 (phospho Tyr1175) antibody

Cat. No. GTX38577

Host	Rabbit
Clonality	Polyclonal
Isotype	IgG
Application	IHC-P
Reactivity	Mouse

Package

50 µl

APPLICATION

Application Note

*Optimal dilutions/concentrations should be determined by the researcher.

Suggested dilution	Recommended dilution
IHC-P	Assay dependent
Not tested in other applications.	

Calculated MW 152 kDa. ([Note](#))

PROPERTIES

Form	Liquid
Buffer	0.01M TBS, 0.5% BSA, 25% Glycerol
Preservative	0.015% ProClin 300
Storage	Store as concentrated solution. Centrifuge briefly prior to opening vial. For short-term storage (1-2 weeks), store at 4°C. For long-term storage, aliquot and store at -20°C or below. Avoid multiple freeze-thaw cycles.
Concentration	0.5 mg/ml (Please refer to the vial label for the specific concentration.)
Immunogen	KLH conjugated synthetic peptide derived between KD(p-Y)IV amino acids of human VEGFR2 (phospho-Tyr1175)
Purification	Protein A purified
Conjugation	Unconjugated

Note

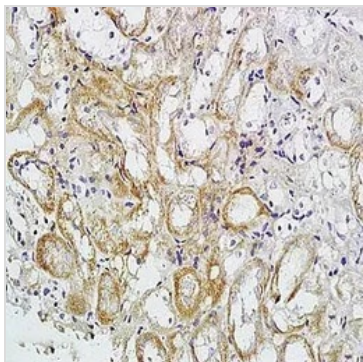
For laboratory research use only. Not for any clinical, therapeutic, or diagnostic use in humans or animals. Not for animal or human consumption.

Purchasers shall not, and agree not to enable third parties to, analyze, copy, reverse engineer or otherwise attempt to determine the structure or sequence of the product.



For full product information, images and publications, please visit our [website](#).

DATA IMAGES



GTX38577 IHC-P Image

IHC-P analysis of mouse kidney tissue using GTX38577 VEGF Receptor 2 (phospho Tyr1175) antibody.

Dilution : 1:200



For full product information, images and publications, please visit our [website](#).

Date 2024 / 04 / 27 Page 2 of 2