

Aurora A (phospho Thr288) antibody

Cat. No. GTX38590

Host	Rabbit
Clonality	Polyclonal
Isotype	IgG
Applications	IHC-P
Reactivity	Human

Package

50 µl

Applications

Application Note

*Optimal dilutions/concentrations should be determined by the researcher.

Suggested dilution	Recommended dilution
IHC-P	1:50-100

Not tested in other applications.

Product Note AuroraA (phospho-Thr288) Antibody detects endogenous levels of Aurora A only when phosphorylated at threonine 288.

Properties

Form	Liquid
Buffer	PBS, 150mM NaCl, 50% Glycerol
Preservative	0.02% Sodium azide
Storage	Store as concentrated solution. Centrifuge briefly prior to opening vial. For short-term storage (1-2 weeks), store at 4°C. For long-term storage, aliquot and store at -20°C or below. Avoid multiple freeze-thaw cycles.
Concentration	1 mg/ml (Please refer to the vial label for the specific concentration.)
Immunogen	The antiserum was produced against synthesized phosphopeptide derived from human AuroraA around the phosphorylation site of threonine 288 (R -T-T(p)-L-M).
Purification	Purified by antigen-affinity chromatography
Conjugation	Unconjugated

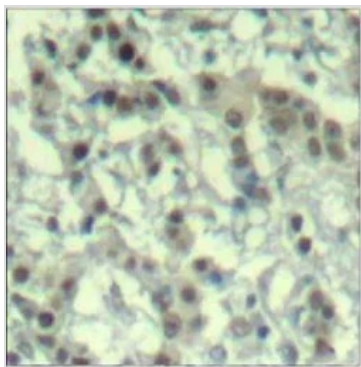
Note

For laboratory research use only. Not for any clinical, therapeutic, or diagnostic use in humans or animals. Not for animal or human consumption.

Purchasers shall not, and agree not to enable third parties to, analyze, copy, reverse engineer or otherwise attempt to determine the structure or sequence of the product.



For full product information, images and publications, please visit our [website](#).

DATA IMAGES

GTX38590 IHC-P Image

IHC-P analysis of human breast carcinoma tissue using GTX38590 Aurora A (phospho Thr288) antibody.



For full product information, images and publications, please visit our [website](#).