

## Rb (phospho Ser795) antibody

**Cat. No. GTX38604**

<b>Host</b>	Rabbit
<b>Clonality</b>	Polyclonal
<b>Isotype</b>	IgG
<b>Applications</b>	WB, ICC/IF, IHC-P
<b>Reactivity</b>	Human

Package

50 µl

## Applications

**Application Note**

\*Optimal dilutions/concentrations should be determined by the researcher.

Suggested dilution	Recommended dilution
WB	1:500-1:1000
ICC/IF	1:100-1:200
IHC-P	1:50-1:100

Not tested in other applications.

<b>Calculated MW</b>	106 kDa. ( <a href="#">Note</a> )
<b>Product Note</b>	This antibody detects endogenous levels of Rb only when phosphorylated at serine 795.

## Properties

<b>Form</b>	Liquid
<b>Buffer</b>	PBS, 150mM NaCl, 50% Glycerol
<b>Preservative</b>	0.02% Sodium azide
<b>Storage</b>	Store as concentrated solution. Centrifuge briefly prior to opening vial. For short-term storage (1-2 weeks), store at 4°C. For long-term storage, aliquot and store at -20°C or below. Avoid multiple freeze-thaw cycles.
<b>Concentration</b>	1 mg/ml (Please refer to the vial label for the specific concentration.)
<b>Immunogen</b>	The antiserum was produced against synthesized phosphopeptide derived from human Rb around the phosphorylation site of serine 795 (P -S-S(p)-P-L).
<b>Purification</b>	Purified by antigen-affinity chromatography
<b>Conjugation</b>	Unconjugated

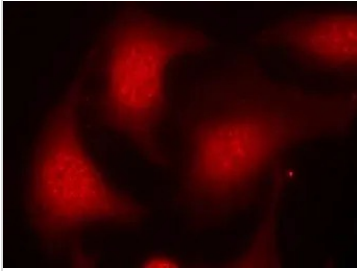
For full product information, images and publications, please visit our [website](#).

Date 2025 / 09 / 17 Page 1 of 2

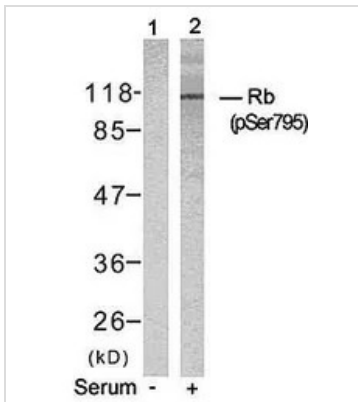
For laboratory research use only. Not for any clinical, therapeutic, or diagnostic use in humans or animals. Not for animal or human consumption.

**Note**

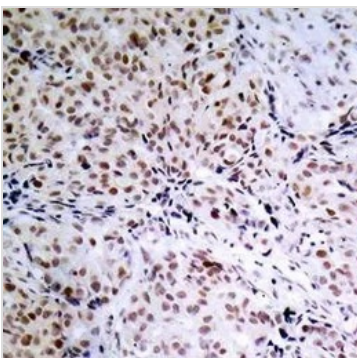
Purchasers shall not, and agree not to enable third parties to, analyze, copy, reverse engineer or otherwise attempt to determine the structure or sequence of the product.

**DATA IMAGES**

**GTX38604 ICC/IF Image**

ICC/IF analysis of HeLa cells using GTX38604 Rb (phospho Ser795) antibody.


**GTX38604 WB Image**

WB analysis of extracts from K562 cells untreated (lane 1) or treated with serum (lane 2) using GTX38604 Rb (phospho Ser795) antibody.


**GTX38604 IHC-P Image**

IHC-P analysis of human breast carcinoma tissue using GTX38604 Rb (phospho Ser795) antibody.



For full product information, images and publications, please visit our [website](#).