

MEF2A (phospho Ser408) antibody

Cat. No. GTX38634

Host	Rabbit
Clonality	Polyclonal
Isotype	IgG
Applications	IHC-P
Reactivity	Human

Package
50 µl

Applications

Application Note

*Optimal dilutions/concentrations should be determined by the researcher.

Suggested dilution	Recommended dilution
IHC-P	1:50-1:100

Not tested in other applications.

Product Note MEF2A (phospho-Ser408) antibody detects endogenous levels of MEF2A only when phosphorylated at serine 408.

Properties

Form	Liquid
Buffer	PBS, 150mM NaCl, 50% Glycerol
Preservative	0.02% Sodium azide
Storage	Store as concentrated solution. Centrifuge briefly prior to opening vial. For short-term storage (1-2 weeks), store at 4°C. For long-term storage, aliquot and store at -20°C or below. Avoid multiple freeze-thaw cycles.
Concentration	1 mg/ml (Please refer to the vial label for the specific concentration.)
Immunogen	The antiserum was produced against synthesized phosphopeptide derived from human MEF2A around the phosphorylation site of serine 408 (P -I-S(p)-P-P).
Purification	Purified by antigen-affinity chromatography
Conjugation	Unconjugated

Note

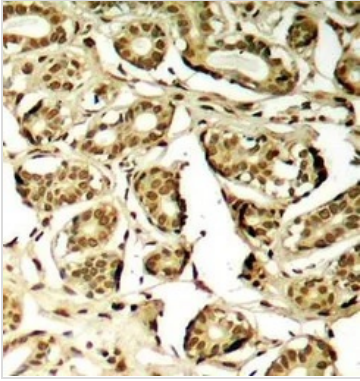
For laboratory research use only. Not for any clinical, therapeutic, or diagnostic use in humans or animals. Not for animal or human consumption.

Purchasers shall not, and agree not to enable third parties to, analyze, copy, reverse engineer or otherwise attempt to determine the structure or sequence of the product.



For full product information, images and publications, please visit our [website](#).

DATA IMAGES

**GTX38634 IHC-P Image**

IHC-P analysis of human breast carcinoma tissue using GTX38634 MEF2A (phospho Ser408) antibody.



For full product information, images and publications, please visit our [website](#).