

## HSP27 (phospho Ser15) antibody

Cat. No. GTX38674

Host	Rabbit
Clonality	Polyclonal
Isotype	IgG
Applications	WB, ICC/IF, IHC-P
Reactivity	Human

Package

50 µl

## Applications

## Application Note

\*Optimal dilutions/concentrations should be determined by the researcher.

Suggested dilution	Recommended dilution
WB	1:500-1:1000
ICC/IF	1:100-1:200
IHC-P	1:50-1:100

Not tested in other applications.

Calculated MW	23 kDa. ( <a href="#">Note</a> )
Product Note	HSP27 (phospho-Ser15) antibody detects endogenous levels of HSP27 only when phosphorylated at serine 15.

## Properties

Form	Liquid
Buffer	PBS, 150mM NaCl, 50% Glycerol
Preservative	0.02% Sodium azide
Storage	Store as concentrated solution. Centrifuge briefly prior to opening vial. For short-term storage (1-2 weeks), store at 4°C. For long-term storage, aliquot and store at -20°C or below. Avoid multiple freeze-thaw cycles.
Concentration	1 mg/ml (Please refer to the vial label for the specific concentration.)
Immunogen	The antiserum was produced against synthesized phosphopeptide derived from human HSP27 around the phosphorylation site of serine15 (G -P-S(p)-W-D).
Purification	Purified by antigen-affinity chromatography
Conjugation	Unconjugated



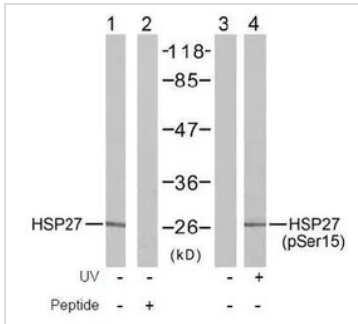
For full product information, images and publications, please visit our [website](#).

Date 2025 / 07 / 17 Page 1 of 2

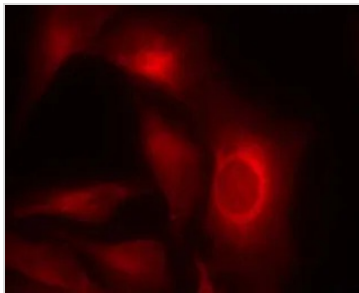
For laboratory research use only. Not for any clinical, therapeutic, or diagnostic use in humans or animals. Not for animal or human consumption.

**Note**

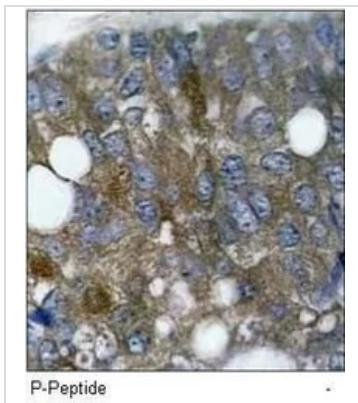
Purchasers shall not, and agree not to enable third parties to, analyze, copy, reverse engineer or otherwise attempt to determine the structure or sequence of the product.

**DATA IMAGES**

**GTx38674 WB Image**

WB analysis of HeLa cell lysate treated or untreated with UV using HSP27 antibody (Lane 1 and 2) and GTx38674 HSP27 (phospho Ser15) antibody (Lane 3 and 4).


**GTx38674 ICC/IF Image**

ICC/IF analysis of methanol-fixed HeLa cells using GTx38674 HSP27 (phospho Ser15) antibody.


**GTx38674 IHC-P Image**

IHC-P analysis of human breast carcinoma tissue using GTx38674 HSP27 (phospho Ser15) antibody.



For full product information, images and publications, please visit our [website](https://www.genetex.com).