

HSP27 (phospho Ser15) antibody

Cat. No. GTX38674

Host	Rabbit
Clonality	Polyclonal
Isotype	IgG
Applications	WB, ICC/IF, IHC-P
Reactivity	Human

Package
50 µl

Applications

Application Note

*Optimal dilutions/concentrations should be determined by the researcher.

Suggested dilution	Recommended dilution
WB	1:500-1:1000
ICC/IF	1:100-1:200
IHC-P	1:50-1:100

Not tested in other applications.

Calculated MW 23 kDa. ([Note](#))

Product Note HSP27 (phospho-Ser15) antibody detects endogenous levels of HSP27 only when phosphorylated at serine 15.

Properties

Form	Liquid
Buffer	PBS, 150mM NaCl, 50% Glycerol
Preservative	0.02% Sodium azide
Storage	Store as concentrated solution. Centrifuge briefly prior to opening vial. For short-term storage (1-2 weeks), store at 4°C. For long-term storage, aliquot and store at -20°C or below. Avoid multiple freeze-thaw cycles.
Concentration	1 mg/ml (Please refer to the vial label for the specific concentration.)
Immunogen	The antiserum was produced against synthesized phosphopeptide derived from human HSP27 around the phosphorylation site of serine15 (G -P-S(p)-W-D).
Purification	Purified by antigen-affinity chromatography
Conjugation	Unconjugated



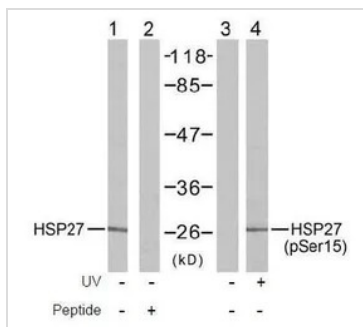
For full product information, images and publications, please visit our [website](#).

For laboratory research use only. Not for any clinical, therapeutic, or diagnostic use in humans or animals. Not for animal or human consumption.

Note

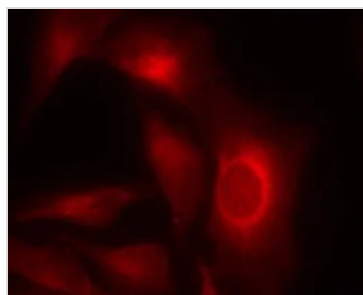
Purchasers shall not, and agree not to enable third parties to, analyze, copy, reverse engineer or otherwise attempt to determine the structure or sequence of the product.

DATA IMAGES



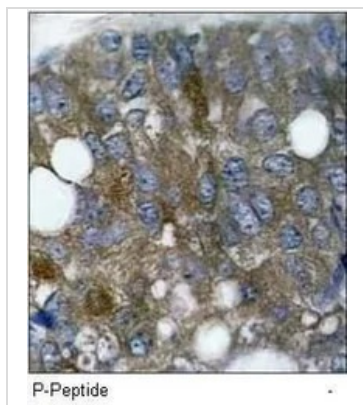
GTX38674 WB Image

WB analysis of HeLa cell lysate treated or untreated with UV using HSP27 antibody (Lane 1 and 2) and GTX38674 HSP27 (phospho Ser15) antibody (Lane 3 and 4).



GTX38674 ICC/IF Image

ICC/IF analysis of methanol-fixed HeLa cells using GTX38674 HSP27 (phospho Ser15) antibody.



GTX38674 IHC-P Image

IHC-P analysis of human breast carcinoma tissue using GTX38674 HSP27 (phospho Ser15) antibody.



For full product information, images and publications, please visit our [website](#).