

VWF antibody [RFF-VIII R/1]

Cat. No. GTX38800

Host	Mouse
Clonality	Monoclonal
Isotype	IgG1
Applications	IHC-P, ELISA, Purification, RIA
Reactivity	Human

Package
500 µg

Applications

Application Note

*Optimal dilutions/concentrations should be determined by the researcher.

Suggested dilution	Recommended dilution
IHC-P	1/50-1/200
ELISA	Assay dependent
Purification	Assay dependent
RIA	Assay dependent

Note : This product requires protein digestion pre-treatment of paraffin sections e.g. trypsin or pronase.

Not tested in other applications.

Properties

Form	Liquid
Buffer	PBS
Preservative	0.09% Sodium azide
Storage	Store as concentrated solution. Centrifuge briefly prior to opening vial. For short-term storage (1-2 weeks), store at 4°C. For long-term storage, aliquot and store at -20°C or below. Avoid multiple freeze-thaw cycles.
Concentration	1.0 mg/ml (Please refer to the vial label for the specific concentration.)
Immunogen	Human Factor VIII complex partially purified from Factor VIII concentrate.
Purification	Protein A purified From tissue culture supernatant
Conjugation	Unconjugated

Note

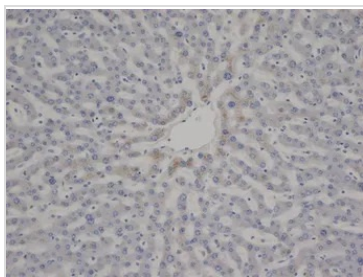
For laboratory research use only. Not for any clinical, therapeutic, or diagnostic use in humans or animals. Not for animal or human consumption.

Purchasers shall not, and agree not to enable third parties to, analyze, copy, reverse engineer or otherwise attempt to determine the structure or sequence of the product.



For full product information, images and publications, please visit our [website](#).

DATA IMAGES

**GTX38800 IHC-P Image**

IHC-P analysis of human liver tissue using GTX38800 VWF antibody [RFF-VIII R/1].



For full product information, images and publications, please visit our [website](#).