

V5 tag antibody [SV5-Pk2]

Cat. No. GTX38826

Host	Mouse
Clonality	Monoclonal
Isotype	IgG1
Applications	WB, IP, ELISA
Reactivity	Species independent

Package

500 µg

Applications

Application Note

*Optimal dilutions/concentrations should be determined by the researcher.

Suggested dilution	Recommended dilution
WB	1/100-1/500
IP	Assay dependent
ELISA	Assay dependent

Not tested in other applications.

Properties

Form	Liquid
Buffer	PBS
Preservative	0.09% Sodium azide
Storage	Store as concentrated solution. Centrifuge briefly prior to opening vial. For short-term storage (1-2 weeks), store at 4°C. For long-term storage, aliquot and store at -20°C or below. Avoid multiple freeze-thaw cycles.
Concentration	1 mg/ml (Please refer to the vial label for the specific concentration.)
Immunogen	A recombinant peptide corresponding to the V5 tag fused to a class II - restricted T helper cell epitope.
Purification	Protein G purified From tissue culture supernatant
Conjugation	Unconjugated

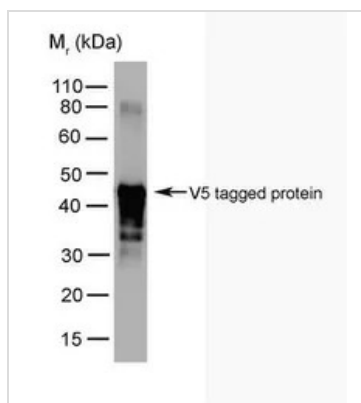
Note

For laboratory research use only. Not for any clinical, therapeutic, or diagnostic use in humans or animals. Not for animal or human consumption.

Purchasers shall not, and agree not to enable third parties to, analyze, copy, reverse engineer or otherwise attempt to determine the structure or sequence of the product.



For full product information, images and publications, please visit our [website](#).

DATA IMAGES

GTX38826 WB Image

WB analysis of V5 tagged protein using GTX38826 V5 tag antibody [SV5-Pk2].



For full product information, images and publications, please visit our [website](https://www.genetex.com).