

TRPA1 antibody

Cat. No. GTX38865

Host	Rabbit
Clonality	Polyclonal
Isotype	IgG
Application	IHC-P
Reactivity	Human

Package
50 µg

APPLICATION

Application Note

*Optimal dilutions/concentrations should be determined by the researcher.

Suggested dilution	Recommended dilution
IHC-P	10-20µg/ml
Note : This product requires antigen retrieval using heat treatment prior to staining of paraffin sections. Sodium citrate buffer pH 6.0 is recommended for this purpose.	

Not tested in other applications.

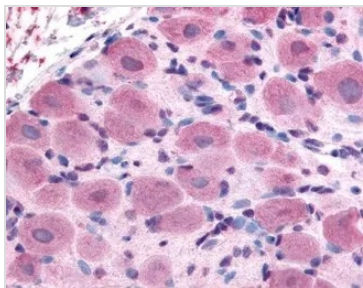
Calculated MW 128 kDa. ([Note](#))

PROPERTIES

Form	Liquid
Buffer	PBS
Preservative	0.1% Sodium azide
Storage	Store as concentrated solution. Centrifuge briefly prior to opening vial. For short-term storage (1-2 weeks), store at 4°C. For long-term storage, aliquot and store at -20°C or below. Avoid multiple freeze-thaw cycles.
Concentration	1.0 mg/ml (Please refer to the vial label for the specific concentration.)
Immunogen	Synthetic peptide: internal domain of human TRPA1, conjugated to Keyhole Limpet Hemocyanin (KLH).
Purification	Purified by affinity chromatography
Conjugation	Unconjugated
Note	For laboratory research use only. Not for any clinical, therapeutic, or diagnostic use in humans or animals. Not for animal or human consumption. Purchasers shall not, and agree not to enable third parties to, analyze, copy, reverse engineer or otherwise attempt to determine the structure or sequence of the product.



For full product information, images and publications, please visit our [website](#).

DATA IMAGES

GTX38865 IHC-P Image

IHC analysis of human spinal cord dorsal root ganglion tissue using GTX38865 TRPA1 antibody.



For full product information, images and publications, please visit our [website](#).