

Cardiac Troponin T antibody [TT44 (BGN/1288/44)]

Cat. No. GTX38867

Host	Mouse
Clonality	Monoclonal
Isotype	IgG1
Applications	WB, ELISA
Reactivity	Human

Package
200 µg

Applications

Application Note

*Optimal dilutions/concentrations should be determined by the researcher.

Suggested dilution	Recommended dilution
WB	1/100
ELISA	Assay dependent

Note : Under reducing conditions, this antibody reacts with the purified cardiac isoform but does not react with the skeletal isoform.

Not tested in other applications.

Calculated MW	36 kDa. (Note)
Product Note	This antibody recognizes Troponin T cardiac isoform 1.

Properties

Form	Liquid
Buffer	PBS
Preservative	0.09% Sodium azide
Storage	Store as concentrated solution. Centrifuge briefly prior to opening vial. For short-term storage (1-2 weeks), store at 4°C. For long-term storage, aliquot and store at -20°C or below. Avoid multiple freeze-thaw cycles.
Concentration	1.0 mg/ml (Please refer to the vial label for the specific concentration.)
Immunogen	HMW conjugate peptide sequence - FMPNLVPPKIC.
Purification	Protein G purified
Conjugation	Unconjugated



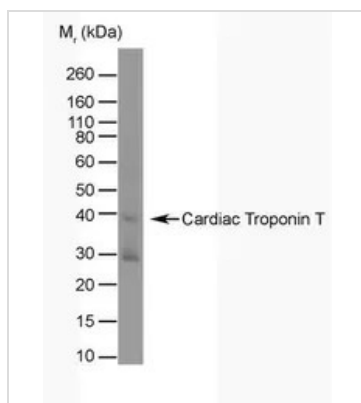
For full product information, images and publications, please visit our [website](#).

Date 2026 / 01 / 13 Page 1 of 2

For laboratory research use only. Not for any clinical, therapeutic, or diagnostic use in humans or animals. Not for animal or human consumption.

Note

Purchasers shall not, and agree not to enable third parties to, analyze, copy, reverse engineer or otherwise attempt to determine the structure or sequence of the product.

DATA IMAGES

GTX38867 WB Image

WB analysis of human heart tissue lysate using GTX38867 Cardiac Troponin T antibody [TT44 (BGN/1288/44)].



For full product information, images and publications, please visit our [website](https://www.genetex.com).