

Talin-2 antibody [53.8]

Cat. No. GTX38971

Host	Mouse
Clonality	Monoclonal
Isotype	IgG2b
Application	WB, ICC/IF, IHC-P, IP
Reactivity	Human, Mouse

Package
200 µg

APPLICATION

Application Note

*Optimal dilutions/concentrations should be determined by the researcher.

Suggested dilution	Recommended dilution
WB	Assay dependent
ICC/IF	Assay dependent
IHC-P	1/25-1/100
IP	Assay dependent

Not tested in other applications.

Calculated MW 254 kDa. ([Note](#))**Product Note** This antibody recognizes an epitope within the range of amino acids 2470-2500.

PROPERTIES

Form	Liquid
Buffer	PBS
Preservative	0.09% Sodium azide
Storage	Store as concentrated solution. Centrifuge briefly prior to opening vial. For short-term storage (1-2 weeks), store at 4°C. For long-term storage, aliquot and store at -20°C or below. Avoid multiple freeze-thaw cycles.
Concentration	1.0 mg/ml (Please refer to the vial label for the specific concentration.)
Immunogen	Recombinant Mouse talin-2 (aa2300-2542).
Purification	Protein G purified From tissue culture supernatant
Conjugation	Unconjugated



For full product information, images and publications, please visit our [website](#).

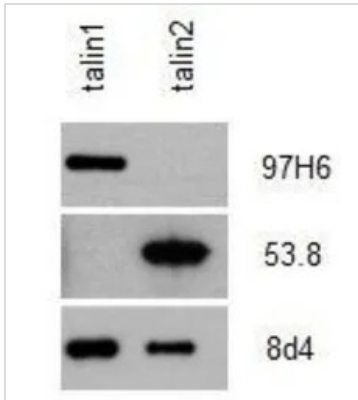
Date 2024 / 04 / 23 Page 1 of 2

For laboratory research use only. Not for any clinical, therapeutic, or diagnostic use in humans or animals. Not for animal or human consumption.

Note

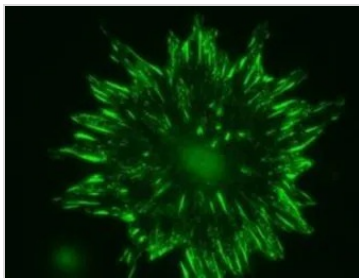
Purchasers shall not, and agree not to enable third parties to, analyze, copy, reverse engineer or otherwise attempt to determine the structure or sequence of the product.

DATA IMAGES



GTX38971 WB Image

WB analysis of anti talin antibody binding to recombinant talin proteins showing specificity of Mouse anti Human talin-2 antibody, clone 53.8 (GTX38971) for talin-2, not recognizing recombinant human talin-1. In contrast Mouse anti talin-1 antibody, clone 97H6 (GTX38973) does not recognize recombinant human talin-2. Clone 8D4, recognizing both talin isoforms.



GTX38971 ICC/IF Image

ICC/IF analysis of isolated talin-1 null cells using GTX38971 Talin-2 antibody. Cells were fixed in paraformaldehyde and permeablized with triton X-100.



GTX38971 WB Image

WB analysis of talin-1 and talin-2 expression in murine tissue lysates using Mouse anti Human talin-2 antibody, clone 53.8 (GTX38971) and Mouse anti Human talin-1 antibody, clone 97H6 (GTX38973). (B) brain, (H) heart, (S) spleen, (K) kidney, (Lu) lung, Li (liver), (M) muscle.



For full product information, images and publications, please visit our [website](https://www.genetex.com).