

Talin-1 antibody [97H6]

Cat. No. GTX38973

Host	Mouse
Clonality	Monoclonal
Isotype	IgG1
Application	WB, ICC/IF, IHC-P, IP
Reactivity	Human, Mouse

Package
200 µg

APPLICATION

Application Note

*Optimal dilutions/concentrations should be determined by the researcher.

Suggested dilution	Recommended dilution
WB	Assay dependent
ICC/IF	Assay dependent
IHC-P	1/25-1/100
IP	Assay dependent

Note : This product requires antigen retrieval using heat treatment prior to staining of paraffin sections. Sodium citrate buffer pH 6.0 is recommended for this purpose.

Not tested in other applications.

Calculated MW 270 kDa. ([Note](#))

Product Note This antibody recognizes an epitope within the region of amino acids 482-655 of humanTalin-1.

PROPERTIES

Form	Liquid
Buffer	PBS
Preservative	0.09% Sodium azide
Storage	Store as concentrated solution. Centrifuge briefly prior to opening vial. For short-term storage (1-2 weeks), store at 4°C. For long-term storage, aliquot and store at -20°C or below. Avoid multiple freeze-thaw cycles.
Concentration	1.0 mg/ml (Please refer to the vial label for the specific concentration.)
Immunogen	his-tagged polypeptide containing residues 489–911 of mouse talin1.
Purification	Protein G purified From tissue culture supernatant
Conjugation	Unconjugated



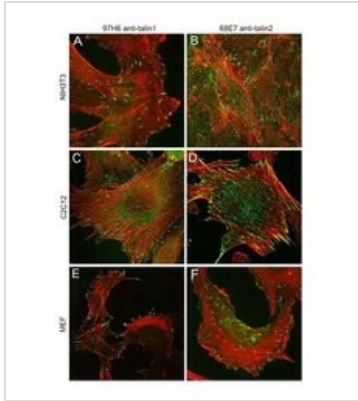
For full product information, images and publications, please visit our [website](#).

Date 2024 / 04 / 24 Page 1 of 2

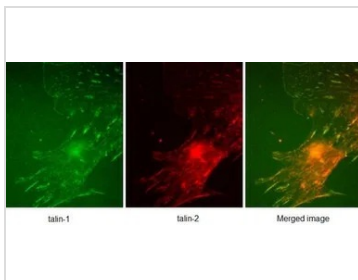
For laboratory research use only. Not for any clinical, therapeutic, or diagnostic use in humans or animals. Not for animal or human consumption.

Note

Purchasers shall not, and agree not to enable third parties to, analyze, copy, reverse engineer or otherwise attempt to determine the structure or sequence of the product.

DATA IMAGES

GTx38973 ICC/IF Image

ICC/IF analysis of mouse NIH3T3, undifferentiated C2C12 cells and mouse embryo fibroblasts (MEF) using GTx38973 Talin-1 antibody. Cells were fixed and permeabilised using methanol.


GTx38973 ICC/IF Image

Murine embryonic fibroblast stained with Mouse anti talin 1 antibody, clone 97H6 (GTx38973) and Mouse anti talin-2 antibody, clone 68E7 by immunofluorescence demonstrating partial overlapping expression.



For full product information, images and publications, please visit our [website](https://www.genetex.com).