

Surfactant Protein D antibody [1.7]

Cat. No. GTX39355

Host	Mouse
Clonality	Monoclonal
Isotype	IgG1
Applications	WB, ICC/IF, IHC-P, IHC-Fr
Reactivity	Pig

Package
250 µg

Applications

Application Note

*Optimal dilutions/concentrations should be determined by the researcher.

Suggested dilution	Recommended dilution
WB	Assay dependent
ICC/IF	Assay dependent
IHC-P	Assay dependent
IHC-Fr	1µg/ml

Not tested in other applications.

Calculated MW 38 kDa. ([Note](#))

Properties

Form	Liquid
Buffer	PBS
Preservative	0.09% Sodium azide
Storage	Store as concentrated solution. Centrifuge briefly prior to opening vial. For short-term storage (1-2 weeks), store at 4°C. For long-term storage, aliquot and store at -20°C or below. Avoid multiple freeze-thaw cycles.
Concentration	1.0 mg/ml (Please refer to the vial label for the specific concentration.)
Immunogen	Purified porcine surfactant protein D
Purification	Protein A purified
Conjugation	Unconjugated

Note

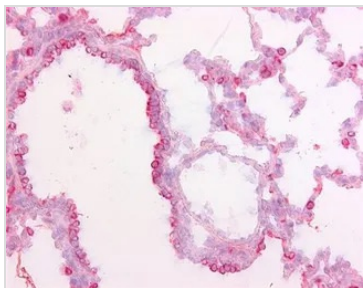
For laboratory research use only. Not for any clinical, therapeutic, or diagnostic use in humans or animals. Not for animal or human consumption.

Purchasers shall not, and agree not to enable third parties to, analyze, copy, reverse engineer or otherwise attempt to determine the structure or sequence of the product.



For full product information, images and publications, please visit our [website](#).

DATA IMAGES



GTX39355 IHC-Fr Image

IHC-Fr analysis of pig lung tissue using GTX39355 Surfactant Protein D antibody [1.7].



For full product information, images and publications, please visit our [website](#).