

# Peptidoglycan antibody [3F6B3 (10H6)]

**Cat. No. GTX39437**

<b>Host</b>	Mouse
<b>Clonality</b>	Monoclonal
<b>Isotype</b>	IgG1
<b>Applications</b>	IHC-P, IHC-Fr, ELISA, IHC
<b>Reactivity</b>	E. coli, Bacteria

References ( 4 )

Package

100 µl

## Applications

### Application Note

\*Optimal dilutions/concentrations should be determined by the researcher.

Suggested dilution	Recommended dilution
IHC-P	Assay dependent
IHC-Fr	Assay dependent
ELISA	Assay dependent
IHC	Assay dependent

Not tested in other applications.

**Product Note** This antibody is specific for the 3D polymer complex structure of peptidoglycan (PG).

## Properties

<b>Form</b>	Liquid
<b>Buffer</b>	Ascites
<b>Preservative</b>	No preservative
<b>Storage</b>	Store as concentrated solution. Centrifuge briefly prior to opening vial. For short-term storage (1-2 weeks), store at 4°C. For long-term storage, aliquot and store at -20°C or below. Avoid multiple freeze-thaw cycles.
<b>Concentration</b>	Batch dependent (Please refer to the vial label for the specific concentration.)
<b>Immunogen</b>	This antibody was raised against insoluble peptidoglycan obtained by TCA-heat and ethanol extraction of Streptococcus mutans BHT cells.
<b>Conjugation</b>	Unconjugated

### Note

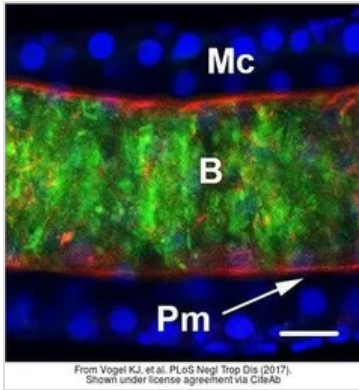
For laboratory research use only. Not for any clinical, therapeutic, or diagnostic use in humans or animals. Not for animal or human consumption.

Purchasers shall not, and agree not to enable third parties to, analyze, copy, reverse engineer or otherwise attempt to determine the structure or sequence of the product.



For full product information, images and publications, please visit our [website](#).

## DATA IMAGES



### GTX39437 IHC Image

The data was published in the journal PLoS Negl Trop Dis in 2017. [PMID: 28060822](https://pubmed.ncbi.nlm.nih.gov/28060822/)



For full product information, images and publications, please visit our [website](https://www.genetex.com).