

Marco antibody [ED31]

Cat. No. GTX39743

| | |
|--------------|-------------------------|
| Host | Rat |
| Clonality | Monoclonal |
| Isotype | IgG1 |
| Applications | WB, ICC/IF, IHC-Fr, FCM |
| Reactivity | Mouse |

References (2)

Package

25 µg

Applications

Application Note

*Optimal dilutions/concentrations should be determined by the researcher.

| Suggested dilution | Recommended dilution |
|--------------------|----------------------|
| WB | Assay dependent |
| ICC/IF | Assay dependent |
| IHC-Fr | 1/200-1/400 |
| FCM | 1/25-1/50 |

Note : Use 10µl of the suggested working dilution to label 10⁶ cells in 100µl.

Not tested in other applications.

Calculated MW 53 kDa. ([Note](#))

Properties

| | |
|---------------|--|
| Form | Liquid |
| Buffer | PBS |
| Preservative | 0.09% Sodium azide |
| Storage | Store as concentrated solution. Centrifuge briefly prior to opening vial. For short-term storage (1-2 weeks), store at 4°C. For long-term storage, aliquot and store at -20°C or below. Avoid multiple freeze-thaw cycles. |
| Concentration | 1.0 mg/ml (Please refer to the vial label for the specific concentration.) |
| Immunogen | CHO cells expressing mouse MARCO. |
| Purification | Protein G purified From tissue culture supernatant |
| Conjugation | Unconjugated |

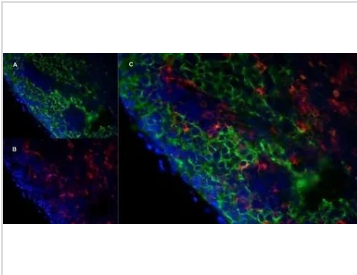


For full product information, images and publications, please visit our [website](#).

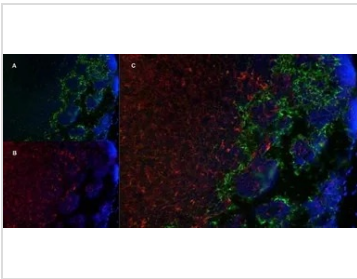
For laboratory research use only. Not for any clinical, therapeutic, or diagnostic use in humans or animals. Not for animal or human consumption.

Note

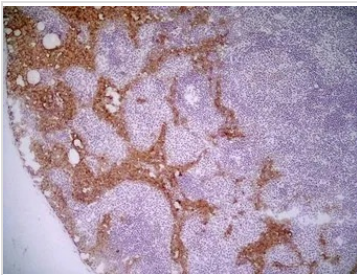
Purchasers shall not, and agree not to enable third parties to, analyze, copy, reverse engineer or otherwise attempt to determine the structure or sequence of the product.

DATA IMAGES

GTX39743 IHC-Fr Image

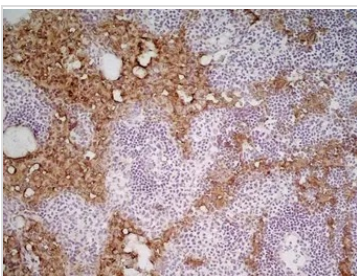
IHC-Fr analysis of mouse lymph node tissue using GTX39743 Marco antibody, green in A and Rat anti Mouse CD8 antibody, clone YTS105.18, red in B. C is the merged image with nuclei counterstained blue using DAPI.


GTX39743 IHC-Fr Image

IHC-Fr analysis of mouse lymph node tissue using GTX39743 Marco antibody, green in A and Rat anti Mouse CD8 antibody, clone YTS105.18, red in B. C is the merged image with nuclei counterstained blue using DAPI.


GTX39743 IHC-Fr Image

IHC-Fr analysis of mouse lymph node tissue using GTX39743 Marco antibody [ED31].


GTX39743 IHC-Fr Image

IHC-Fr analysis of mouse lymph node tissue using GTX39743 Marco antibody [ED31].



For full product information, images and publications, please visit our [website](https://www.genetex.com).