

Parkin antibody [PRK8]

Cat. No. GTX39745

Host	Mouse
Clonality	Monoclonal
Isotype	IgG2b
Applications	WB, ELISA
Reactivity	Human, Mouse, Rat, Hamster

References (1)
Package
100 µl

Applications

Application Note

*Optimal dilutions/concentrations should be determined by the researcher.

Suggested dilution	Recommended dilution
WB	0.25-0.5 µg/ml
ELISA	Assay dependent

Not tested in other applications.

Calculated MW 52 kDa. ([Note](#))

Properties

Form	Liquid
Buffer	PBS
Preservative	15mM Sodium azide
Storage	Store as concentrated solution. Centrifuge briefly prior to opening vial. For short-term storage (1-2 weeks), store at 4°C. For long-term storage, aliquot and store at -20°C or below. Avoid multiple freeze-thaw cycles.
Concentration	~2 mg/ml (Please refer to the vial label for the specific concentration.)
Immunogen	recombinant human Parkin.
Purification	Purified immunoglobulin
Conjugation	Unconjugated

Note

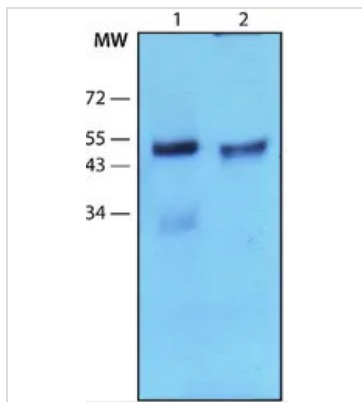
For laboratory research use only. Not for any clinical, therapeutic, or diagnostic use in humans or animals. Not for animal or human consumption.

Purchasers shall not, and agree not to enable third parties to, analyze, copy, reverse engineer or otherwise attempt to determine the structure or sequence of the product.



For full product information, images and publications, please visit our [website](#).

DATA IMAGES



GTX39745 WB Image

WB analysis of rat and mouse brain tissue lysates using GTX39745 Parkin antibody [PRK8].

Dilution : 2µg/mL



For full product information, images and publications, please visit our [website](#).