

# Parkin antibody [PRK8]

**Cat. No. GTX39745**

<b>Host</b>	Mouse
<b>Clonality</b>	Monoclonal
<b>Isotype</b>	IgG2b
<b>Applications</b>	WB, ELISA
<b>Reactivity</b>	Human, Mouse, Rat, Hamster

References ( 1 )

Package

100 µl

## Applications

### Application Note

\*Optimal dilutions/concentrations should be determined by the researcher.

Suggested dilution	Recommended dilution
WB	0.25-0.5 µg/ml
ELISA	Assay dependent

Not tested in other applications.

**Calculated MW** 52 kDa. ( [Note](#) )

## Properties

<b>Form</b>	Liquid
<b>Buffer</b>	PBS
<b>Preservative</b>	15mM Sodium azide
<b>Storage</b>	Store as concentrated solution. Centrifuge briefly prior to opening vial. For short-term storage (1-2 weeks), store at 4°C. For long-term storage, aliquot and store at -20°C or below. Avoid multiple freeze-thaw cycles.
<b>Concentration</b>	~2 mg/ml (Please refer to the vial label for the specific concentration.)
<b>Immunogen</b>	recombinant human Parkin.
<b>Purification</b>	Purified immunoglobulin
<b>Conjugation</b>	Unconjugated

### Note

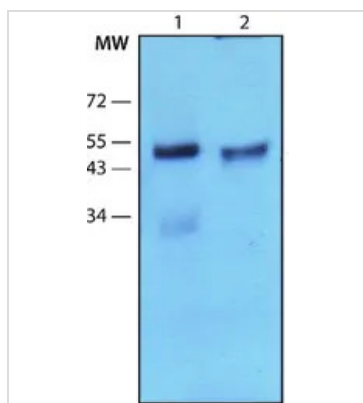
For laboratory research use only. Not for any clinical, therapeutic, or diagnostic use in humans or animals. Not for animal or human consumption.

Purchasers shall not, and agree not to enable third parties to, analyze, copy, reverse engineer or otherwise attempt to determine the structure or sequence of the product.



For full product information, images and publications, please visit our [website](#).

## DATA IMAGES



### GTX39745 WB Image

WB analysis of rat and mouse brain tissue lysates using GTX39745 Parkin antibody [PRK8].

Dilution : 2µg/mL



For full product information, images and publications, please visit our [website](#).