

LC3A/B antibody, N-term

Cat. No. GTX39752

Host	Rabbit
Clonality	Polyclonal
Isotype	IgG
Applications	WB, ICC/IF
Reactivity	Human, Mouse

References (1)

Package

100 µg

Applications

Application Note

*Optimal dilutions/concentrations should be determined by the researcher.

Suggested dilution	Recommended dilution
WB	1/100-1/250
ICC/IF	Assay dependent

Note : This antibody detects a band of approximately 14-15kDa corresponding to LC3-II, and a band of approximately 17kDa corresponding to LC3-I, in HeLa cell lysates.

Not tested in other applications.

Product Note This antibody recognizes both the LC3-I and LC3-II forms of MAP1LC3A and MAP1LC3B.

Properties

Form	Liquid
Buffer	PBS
Preservative	0.09% Sodium azide
Storage	Store as concentrated solution. Centrifuge briefly prior to opening vial. For short-term storage (1-2 weeks), store at 4°C. For long-term storage, aliquot and store at -20°C or below. Avoid multiple freeze-thaw cycles.
Concentration	1.0 mg/ml (Please refer to the vial label for the specific concentration.)
Immunogen	Synthetic peptide sequence PSDRPFKQRRSFADC from the N-Terminal region of LC3A (NP_115903.1; NP_852610.1).
Purification	Purified by affinity chromatography
Conjugation	Unconjugated

Note

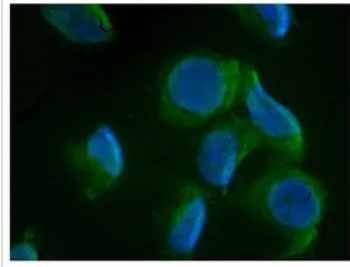
For laboratory research use only. Not for any clinical, therapeutic, or diagnostic use in humans or animals. Not for animal or human consumption.

Purchasers shall not, and agree not to enable third parties to, analyze, copy, reverse engineer or otherwise attempt to determine the structure or sequence of the product.



For full product information, images and publications, please visit our [website](#).

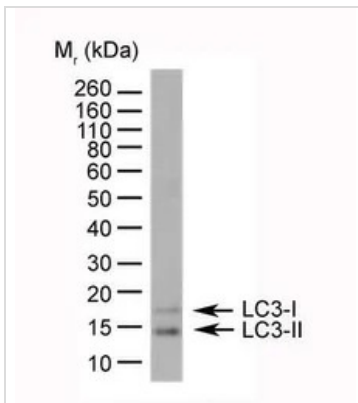
DATA IMAGES



IF staining of HeLa cells with anti-Human MAP1LC3A/B

GTX39752 ICC/IF Image

ICC/IF analysis of HeLa cells using GTX39752 LC3A/B antibody, N-term.



GTX39752 WB Image

WB analysis of HeLa cell lysate using GTX39752 LC3A/B antibody, N-term.



For full product information, images and publications, please visit our [website](https://www.genetex.com).