

Macrophage + Monocyte antibody [MOMA-2]

Cat. No. GTX39773

Host	Rat
Clonality	Monoclonal
Isotype	IgG2b
Applications	ICC/IF, IHC-P, IHC-Fr, FCM
Reactivity	Mouse

References (4)

Package

25 µg

Applications

Application Note

*Optimal dilutions/concentrations should be determined by the researcher.

Suggested dilution	Recommended dilution
ICC/IF	Assay dependent
IHC-P	Assay dependent
IHC-Fr	1/25
FCM	Assay dependent

Not tested in other applications.

Product Note This antibody recognizes an intracellular antigen of mouse macrophages and monocytes.

Properties

Form	Liquid
Buffer	PBS
Preservative	0.09% Sodium azide
Storage	Store as concentrated solution. Centrifuge briefly prior to opening vial. For short-term storage (1-2 weeks), store at 4°C. For long-term storage, aliquot and store at -20°C or below. Avoid multiple freeze-thaw cycles.
Concentration	0.5 mg/ml (Please refer to the vial label for the specific concentration.)
Immunogen	Mouse lymph node stroma.
Purification	Protein G purified From tissue culture supernatant
Conjugation	Unconjugated



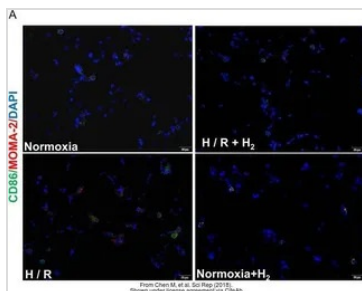
For full product information, images and publications, please visit our [website](#).

For laboratory research use only. Not for any clinical, therapeutic, or diagnostic use in humans or animals. Not for animal or human consumption.

Note

Purchasers shall not, and agree not to enable third parties to, analyze, copy, reverse engineer or otherwise attempt to determine the structure or sequence of the product.

DATA IMAGES

**GTX39773 IHC-Fr Image**

The data was published in the journal Sci Rep in 2018. [PMID: 29789753](https://pubmed.ncbi.nlm.nih.gov/29789753/)



For full product information, images and publications, please visit our [website](https://www.genetex.com).