

## Ly-6B.2 antibody [7/4]

Cat. No. GTX39795

Host	Rat
Clonality	Monoclonal
Isotype	IgG2a
Applications	WB, ICC/IF, IHC-P, IHC-Fr, FCM
Reactivity	Mouse

References ( 1 )

Package

250 µg

## Applications

## Application Note

\*Optimal dilutions/concentrations should be determined by the researcher.

Suggested dilution	Recommended dilution
WB	Assay dependent
ICC/IF	Assay dependent
IHC-P	Assay dependent
IHC-Fr	Assay dependent
FCM	1/50-1/100

**Note :** Use 10µl of the suggested working dilution to label 10<sup>6</sup> cells in 100µl.

Not tested in other applications.

## Product Note

This antibody recognizes the Ly-6B.2 antigen in 129J; AKR; C57BL/6; C57BL/10; C58; DBA/2; NZB; NZW; SJL; MFI; Swiss (PO) Strains whilst A2G; A/Sn; ASW; BALB/c; C3H/HEH; CBA.T6T6 are negative or demonstrate very weak reactivity (Hirsch and Gordon 1982).

## Properties

Form	Liquid
Buffer	PBS
Preservative	0.09% Sodium azide
Storage	Store as concentrated solution. Centrifuge briefly prior to opening vial. Store at 4°C. DO NOT FREEZE.
Concentration	1.0 mg/ml (Please refer to the vial label for the specific concentration.)
Immunogen	Cultured bone marrow cells
Purification	Protein G purified From tissue culture supernatant
Conjugation	Unconjugated

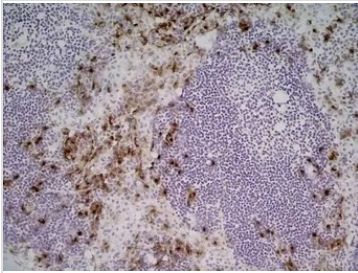


For full product information, images and publications, please visit our [website](#).

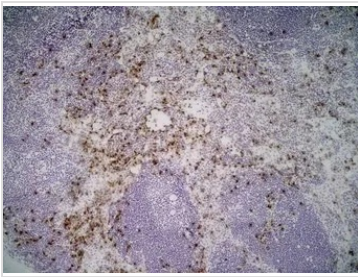
For laboratory research use only. Not for any clinical, therapeutic, or diagnostic use in humans or animals. Not for animal or human consumption.

**Note**

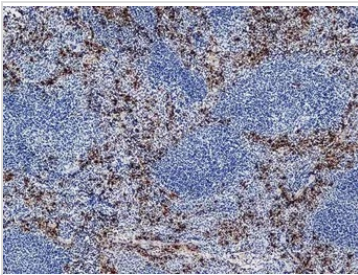
Purchasers shall not, and agree not to enable third parties to, analyze, copy, reverse engineer or otherwise attempt to determine the structure or sequence of the product.

**DATA IMAGES**

**GTX39795 IHC-Fr Image**

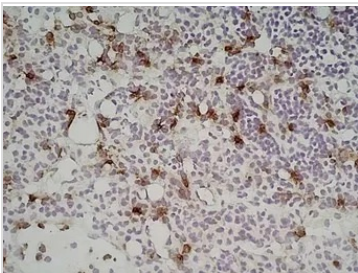
IHC-Fr analysis of mouse lymph node tissue using GTX39795 Ly-6B.2 antibody [7/4].


**GTX39795 IHC-Fr Image**

IHC-Fr analysis of mouse lymph node tissue using GTX39795 Ly-6B.2 antibody [7/4].


**GTX39795 IHC-Fr Image**

IHC-Fr analysis of C57BL/6 mouse spleen tissue using GTX39795 Ly-6B.2 antibody [7/4].


**GTX39795 IHC-Fr Image**

IHC-Fr analysis of mouse lymph node tissue using GTX39795 Ly-6B.2 antibody [7/4].



For full product information, images and publications, please visit our [website](#).