

IL2 antibody

Cat. No. GTX39952

Host	Rabbit
Clonality	Polyclonal
Isotype	IgG
Applications	WB, IHC-P, ELISA, Functional Assay
Reactivity	Human

Package
100 µg

Applications

Application Note

*Optimal dilutions/concentrations should be determined by the researcher.

Suggested dilution	Recommended dilution
WB	0.1-0.2µg/ml
IHC-P	Assay dependent
ELISA	0.5-2µg/ml
Functional Assay	Assay dependent

Not tested in other applications.

Calculated MW 18 kDa. ([Note](#))

Product Note This antibody may be used in an indirect ELISA or as the capture reagent in a sandwich ELISA with GTX43856 as the detection reagent.

Properties

Form	Liquid
Buffer	PBS
Preservative	No preservatives
Storage	Store as concentrated solution. Centrifuge briefly prior to opening vial. For short-term storage (1-2 weeks), store at 4°C. For long-term storage, aliquot and store at -20°C or below. Avoid multiple freeze-thaw cycles.
Concentration	1.0 mg/ml (Please refer to the vial label for the specific concentration.)
Immunogen	Recombinant human IL-2
Purification	Purified by affinity chromatography
Conjugation	Unconjugated



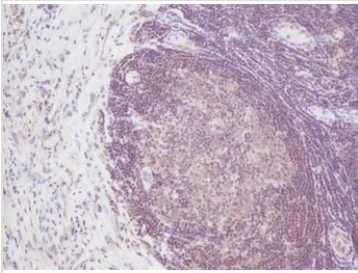
For full product information, images and publications, please visit our [website](#).

For laboratory research use only. Not for any clinical, therapeutic, or diagnostic use in humans or animals. Not for animal or human consumption.

Note

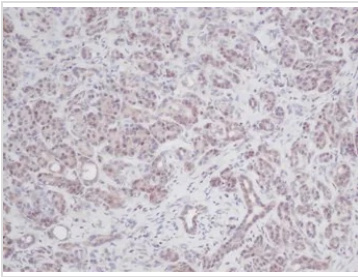
Purchasers shall not, and agree not to enable third parties to, analyze, copy, reverse engineer or otherwise attempt to determine the structure or sequence of the product.

DATA IMAGES



GTX39952 IHC-P Image

IHC-P analysis of human breast invasive ductal carcinoma using GTX39952 IL2 antibody.



GTX39952 IHC-P Image

IHC-P analysis of human breast invasive ductal carcinoma using GTX39952 IL2 antibody.



For full product information, images and publications, please visit our [website](#).