

## IL10 antibody [JES3-9D7] (Low endotoxin, azide free)

**Cat. No. GTX39969**

<b>Host</b>	Rat
<b>Clonality</b>	Monoclonal
<b>Isotype</b>	IgG1
<b>Applications</b>	WB, FCM, ELISA, IHC, Neutralizing /Inhibition
<b>Reactivity</b>	Human

References ( 2 )

Package

500 µg

## Applications

**Application Note**

\*Optimal dilutions/concentrations should be determined by the researcher.

Suggested dilution	Recommended dilution
WB	1/100
FCM	1/10-1/50
ELISA	Assay dependent
IHC	Assay dependent
Neutralizing /Inhibition	Assay dependent

**Note : Permeabilization step is needed.****Rat anti Human Interleukin-10 antibody, clone JES3-9D7 is reported to act as a neutralising antibody (Othieno et al. 1999).**

Not tested in other applications.

<b>Calculated MW</b>	21 kDa. ( <a href="#">Note</a> )
<b>Product Note</b>	Clone JES3-9D7 is reported to act as a neutralising antibody (Othieno et al. 1999).

## Properties

<b>Form</b>	Liquid
<b>Buffer</b>	PBS
<b>Preservative</b>	No preservatives
<b>Storage</b>	Store as concentrated solution. Centrifuge briefly prior to opening vial. For short-term storage (1-2 weeks), store at 4°C. For long-term storage, aliquot and store at -20°C or below. Avoid multiple freeze-thaw cycles.
<b>Concentration</b>	1.0 mg/ml (Please refer to the vial label for the specific concentration.)
<b>Immunogen</b>	Recombinant human IL-10.
<b>Purification</b>	Protein G purified From tissue culture supernatant



For full product information, images and publications, please visit our [website](#).

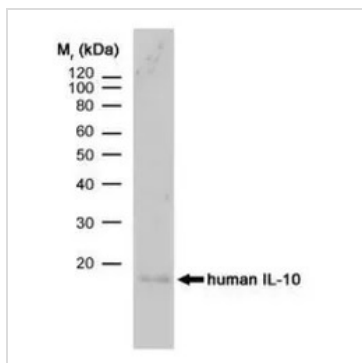
**Endotoxin** < 0.01 EU/ $\mu$ g (determined by the LAL assay)

**Conjugation** Unconjugated

**Note** For laboratory research use only. Not for any clinical, therapeutic, or diagnostic use in humans or animals. Not for animal or human consumption.

Purchasers shall not, and agree not to enable third parties to, analyze, copy, reverse engineer or otherwise attempt to determine the structure or sequence of the product.

## DATA IMAGES

**GTX39969 WB Image**

WB analysis of human IL-10 recombinant protein using GTX39969 IL10 antibody [JES3-9D7] (Low endotoxin, azide free).



For full product information, images and publications, please visit our [website](#).