

Guanylate Cyclase antibody [GC25]

Cat. No. GTX40042

| | |
|--------------|----------------|
| Host | Mouse |
| Clonality | Monoclonal |
| Isotype | IgG2a |
| Applications | WB, ELISA, IHC |
| Reactivity | Human |

Package
200 µg

Applications

Application Note

*Optimal dilutions/concentrations should be determined by the researcher.

| Suggested dilution | Recommended dilution |
|--------------------|----------------------|
| WB | Assay dependent |
| ELISA | Assay dependent |
| IHC | Assay dependent |

Not tested in other applications.

Product Note GTX40042 recognizes the beta subunit of soluble Guanylate Cyclase.

Properties

| | |
|---------------|---|
| Form | Liquid |
| Buffer | PBS |
| Preservative | 0.09% Sodium azide |
| Storage | Store as concentrated solution. Centrifuge briefly prior to opening vial. Store at 4°C. |
| Concentration | Batch dependent (Please refer to the vial label for the specific concentration.) |
| Immunogen | Recombinant hsGC $\alpha 1\beta 1$ heterodimer. |
| Purification | Protein A purified |
| Conjugation | Unconjugated |

Note

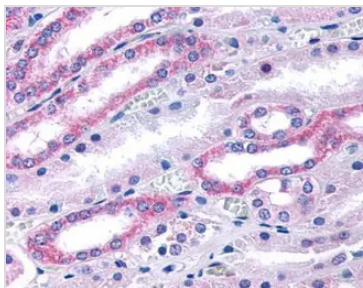
For laboratory research use only. Not for any clinical, therapeutic, or diagnostic use in humans or animals. Not for animal or human consumption.

Purchasers shall not, and agree not to enable third parties to, analyze, copy, reverse engineer or otherwise attempt to determine the structure or sequence of the product.



For full product information, images and publications, please visit our [website](#).

DATA IMAGES



GTX40042 IHC Image



For full product information, images and publications, please visit our [website](#).