

## L1CAM antibody [UJ127.11]

Cat. No. GTX40148

<b>Host</b>	Mouse
<b>Clonality</b>	Monoclonal
<b>Isotype</b>	IgG1
<b>Applications</b>	WB, FCM, IP, IHC
<b>Reactivity</b>	Human

References ( 2 )

Package

100 µg

## Applications

## Application Note

\*Optimal dilutions/concentrations should be determined by the researcher.

Suggested dilution	Recommended dilution
WB	0.25-0.5 µg/ml
FCM	Assay dependent
IP	Assay dependent
IHC	Assay dependent

Not tested in other applications.

**Calculated MW** 140 kDa. ( [Note](#) )**Product Note** UJ127.11 may be useful in the diagnosis of embryonic tumours (e.g. neuroblastoma).

## Properties

<b>Form</b>	Liquid
<b>Buffer</b>	PBS
<b>Preservative</b>	15mM Sodium azide
<b>Storage</b>	Store as concentrated solution. Centrifuge briefly prior to opening vial. For short-term storage (1-2 weeks), store at 4°C. For long-term storage, aliquot and store at -20°C or below. Avoid multiple freeze-thaw cycles.
<b>Concentration</b>	2 mg/ml (Please refer to the vial label for the specific concentration.)
<b>Immunogen</b>	Tissue preparation: Homogenous suspension of human fetal brain
<b>Purification</b>	IgG fraction
<b>Conjugation</b>	Unconjugated



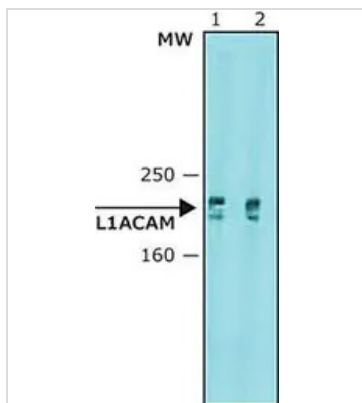
For full product information, images and publications, please visit our [website](#).

For laboratory research use only. Not for any clinical, therapeutic, or diagnostic use in humans or animals. Not for animal or human consumption.

**Note**

Purchasers shall not, and agree not to enable third parties to, analyze, copy, reverse engineer or otherwise attempt to determine the structure or sequence of the product.

## DATA IMAGES



### GTx40148 WB Image

WB analysis of G361 cells using GTx40148 L1CAM antibody [UJ127.11].

Dilution : 0.5 µg/mL(Lane 1) and 0.25 µg/mL(Lane 2)



For full product information, images and publications, please visit our [website](https://www.genetex.com).