

## Inhibin alpha antibody [R1]

Cat. No. GTX40215

Host	Mouse
Clonality	Monoclonal
Isotype	IgG2a
Applications	WB, IHC-P, IHC-Fr
Reactivity	Human, Sheep, Bovine

References ( 1 )

Package

200 µl

## Applications

## Application Note

\*Optimal dilutions/concentrations should be determined by the researcher.

Suggested dilution	Recommended dilution
WB	Assay dependent
IHC-P	1/50-1/100
IHC-Fr	1/50-1/100

**Note :** This product requires antigen retrieval using heat treatment prior to staining of paraffin sections. Sodium citrate buffer pH 6.0 is recommended for this purpose.

Not tested in other applications.

Calculated MW	40 kDa. ( <a href="#">Note</a> )
Product Note	This antibody recognizes the alpha subunit of the 32 kDa human inhibin.

## Properties

Form	Liquid
Buffer	Tissue culture supernatant
Preservative	0.09% Sodium azide
Storage	Store as concentrated solution. Centrifuge briefly prior to opening vial. For short-term storage (1-2 weeks), store at 4°C. For long-term storage, aliquot and store at -20°C or below. Avoid multiple freeze-thaw cycles.
Immunogen	Synthetic peptide comprised of amino acids 1-32 of human inhibin alpha.
Purification	Tissue Culture Supernatant
Conjugation	Unconjugated

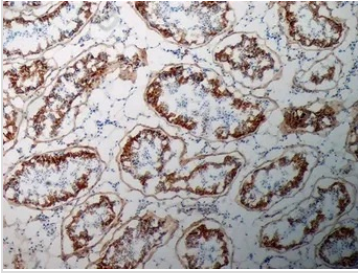


For full product information, images and publications, please visit our [website](#).

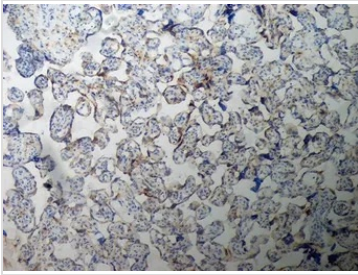
For laboratory research use only. Not for any clinical, therapeutic, or diagnostic use in humans or animals. Not for animal or human consumption.

**Note**

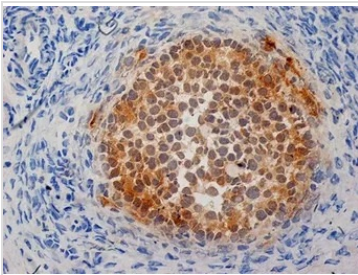
Purchasers shall not, and agree not to enable third parties to, analyze, copy, reverse engineer or otherwise attempt to determine the structure or sequence of the product.

**DATA IMAGES**

**GTX40215 IHC-Fr Image**

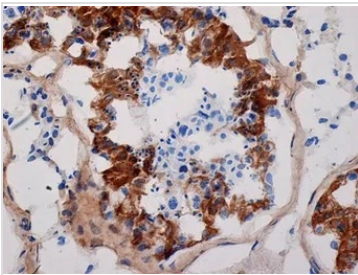
IHC-Fr analysis of human testis tissue using GTX40215 Inhibin alpha antibody. Blocking was with 0.3%H<sub>2</sub>O<sub>2</sub> + 10% normal goat serum.


**GTX40215 IHC-Fr Image**

IHC-Fr analysis of human placenta tissue using GTX40215 Inhibin alpha antibody. Blocking was with 0.3%H<sub>2</sub>O<sub>2</sub> + 10% normal goat serum.


**GTX40215 IHC-Fr Image**

IHC-Fr analysis of human ovary tissue using GTX40215 Inhibin alpha antibody. Blocking was with 0.3%H<sub>2</sub>O<sub>2</sub> + 10% normal goat serum.


**GTX40215 IHC-Fr Image**

IHC-Fr analysis of human testis tissue using GTX40215 Inhibin alpha antibody. Blocking was with 0.3%H<sub>2</sub>O<sub>2</sub> + 10% normal goat serum.



For full product information, images and publications, please visit our [website](https://www.genetex.com).