

Inhibin alpha antibody [R1]

Cat. No. GTX40216

Host	Mouse
Clonality	Monoclonal
Isotype	IgG2a
Applications	WB, IHC-P, IHC-Fr
Reactivity	Human, Sheep, Bovine

Package
500 µl

Applications

Application Note

*Optimal dilutions/concentrations should be determined by the researcher.

Suggested dilution	Recommended dilution
WB	Assay dependent
IHC-P	Assay dependent
IHC-Fr	Assay dependent

Not tested in other applications.

Calculated MW 40 kDa. ([Note](#))

Product Note This antibody recognizes the alpha subunit of the 32 kDa human inhibin.

Properties

Form	Liquid
Buffer	Tissue culture supernatant
Preservative	0.09% Sodium azide
Storage	Store as concentrated solution. Centrifuge briefly prior to opening vial. For short-term storage (1-2 weeks), store at 4°C. For long-term storage, aliquot and store at -20°C or below. Avoid multiple freeze-thaw cycles.
Immunogen	Synthetic peptide comprised of amino acids 1-32 of human inhibin alpha.
Purification	Tissue Culture Supernatant
Conjugation	Unconjugated

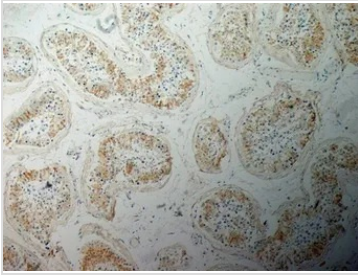
Note For laboratory research use only. Not for any clinical, therapeutic, or diagnostic use in humans or animals. Not for animal or human consumption.

Purchasers shall not, and agree not to enable third parties to, analyze, copy, reverse engineer or otherwise attempt to determine the structure or sequence of the product.

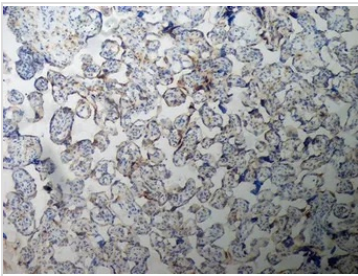


For full product information, images and publications, please visit our [website](#).

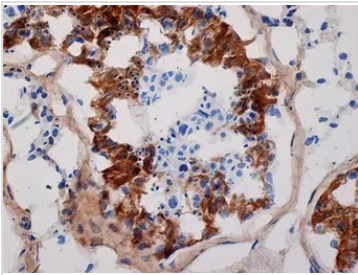
DATA IMAGES

**GTX40216 IHC-P Image**

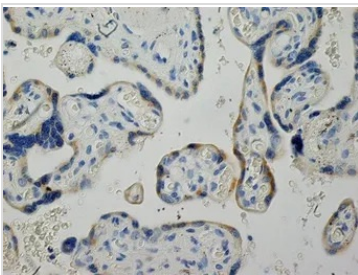
IHC-P analysis of human testis tissue using GTX40216 Inhibin alpha antibody. Antigen retrieval using Tris/EDTA pH9.0. Blocking was with peroxidase Blocking reagent + 10% normal goat serum.

**GTX40216 IHC-Fr Image**

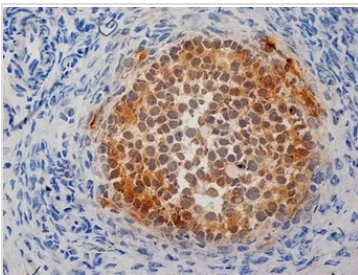
IHC-Fr analysis of human placenta tissue using GTX40216 Inhibin alpha antibody. Blocking was with 0.3% H₂O₂ + 10% normal goat serum.

**GTX40216 IHC-Fr Image**

IHC-Fr analysis of human testis tissue using GTX40216 Inhibin alpha antibody. Blocking was with 0.3% H₂O₂ + 10% normal goat serum.

**GTX40216 IHC-P Image**

IHC-P analysis of human placenta tissue using GTX40216 Inhibin alpha antibody. Antigen retrieval using Tris/EDTA pH9.0. Blocking was with peroxidase Blocking reagent + 10% normal goat serum.

**GTX40216 IHC-Fr Image**

IHC-Fr analysis of human ovary tissue using GTX40216 Inhibin alpha antibody. Blocking was with 0.3% H₂O₂ + 10% normal goat serum.



For full product information, images and publications, please visit our [website](#).