

GNAI2 antibody

Cat. No. GTX40392

Host	Rabbit
Clonality	Polyclonal
Isotype	IgG
Applications	WB, IP
Reactivity	Human

Package
100 µg

Applications

Application Note

For WB: Use at a dilution of 1:4,500 1:5,500. The use of this product can also be used for IP but it is not yet reported. Optimal dilutions/concentrations should be determined by the researcher.

Calculated MW 40 kDa. ([Note](#))

Properties

Form	Liquid
Buffer	PBS
Preservative	0.1% Sodium azide
Storage	Store as concentrated solution. Centrifuge briefly prior to opening vial. For short-term storage (1-2 weeks), store at 4°C. For long-term storage, aliquot and store at -20°C or below. Avoid multiple freeze-thaw cycles.
Concentration	1 mg/ml (Please refer to the vial label for the specific concentration.)
Immunogen	Recombinant fragment - amino acids 231-351 human G protein alpha Inhibitor 2
Purification	Protein A affinity purified From polyclonal serum
Conjugation	Unconjugated

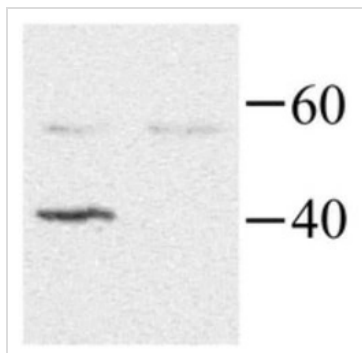
Note

For laboratory research use only. Not for any clinical, therapeutic, or diagnostic use in humans or animals. Not for animal or human consumption.

Purchasers shall not, and agree not to enable third parties to, analyze, copy, reverse engineer or otherwise attempt to determine the structure or sequence of the product.



For full product information, images and publications, please visit our [website](#).

DATA IMAGES

GTX40392 WB Image

Human GNAI2 detected by Western blot in transfected HEK293 cells (left lane)



For full product information, images and publications, please visit our [website](https://www.genetex.com).