

Xanthine Oxidase antibody (HRP)

Cat. No. GTX40541

Host	Rabbit
Clonality	Polyclonal
Isotype	IgG
Application	WB, IP, Dot, ELISA
Reactivity	Bovine

Package
1 mg

APPLICATION

Application Note

*Optimal dilutions/concentrations should be determined by the researcher.

Suggested dilution	Recommended dilution
WB	1:500-1:5000
IP	1:100
Dot	Assay dependent
ELISA	1:5000-1:20000

Not tested in other applications.

Calculated MW 147 kDa. ([Note](#))

PROPERTIES

Form	Liquid
Buffer	20mM Potassium Phosphate, 150mM NaCl, 1% BSA
Preservative	0.01% Gentamicin Sulfate
Storage	Store as concentrated solution. Centrifuge briefly prior to opening vial. For short-term storage (1-2 weeks), store at 4°C. For long-term storage, aliquot and store at -20°C or below. Avoid multiple freeze-thaw cycles.
Concentration	10 mg/ml (Please refer to the vial label for the specific concentration.)
Immunogen	Full-length Xanthine Oxidase from bovine buttermilk
Purification	IgG fraction This product is an IgG fraction antibody purified from monospecific antiserum by a multi-step process which includes delipidation, salt fractionation and ion exchange chromatography followed by extensive dialysis against the buffer stated above.
Conjugation	Horseradish peroxidase(HRP)



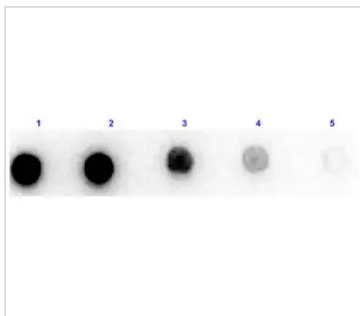
For full product information, images and publications, please visit our [website](#).

For laboratory research use only. Not for any clinical, therapeutic, or diagnostic use in humans or animals. Not for animal or human consumption.

Note

Purchasers shall not, and agree not to enable third parties to, analyze, copy, reverse engineer or otherwise attempt to determine the structure or sequence of the product.

DATA IMAGES



GTX40541 Dot Image

Dot blot analysis of bovine xanthine oxidase protein using GTX40541 Xanthine Oxidase antibody (HRP).

Lane 1 : 100 ng

Lane 2 : 33.33 ng

Lane 3 : 11.11 ng

Lane 4 : 3.7 ng

Lane 5 : 1.23 ng

Dilution : 1 µg/mL



For full product information, images and publications, please visit our [website](https://www.genetex.com).