

Lactoperoxidase antibody (HRP)

Cat. No. GTX40571

| | |
|---------------------|--------------------|
| Host | Sheep |
| Clonality | Polyclonal |
| Isotype | IgG |
| Applications | WB, IP, Dot, ELISA |
| Reactivity | Bovine |

Package
1 mg

Applications

Application Note

*Optimal dilutions/concentrations should be determined by the researcher.

| Suggested dilution | Recommended dilution |
|--------------------|----------------------|
| WB | 1:500-1:5000 |
| IP | 1:100 |
| Dot | Assay dependent |
| ELISA | 1:5000-1:20000 |

Not tested in other applications.

Calculated MW 81 kDa. ([Note](#))

Properties

| | |
|----------------------|---|
| Form | Liquid |
| Buffer | 20mM Potassium Phosphate, 150mM NaCl, 1% BSA |
| Preservative | 0.01% Gentamicin Sulfate |
| Storage | Store as concentrated solution. Centrifuge briefly prior to opening vial. For short-term storage (1-2 weeks), store at 4°C. For long-term storage, aliquot and store at -20°C or below. Avoid multiple freeze-thaw cycles. |
| Concentration | 10 mg/ml (Please refer to the vial label for the specific concentration.) |
| Immunogen | Lactoperoxidase collected from bovine milk |
| Purification | IgG fraction This product is an IgG fraction antibody purified from monospecific antiserum by a multi-step process which includes delipidation, salt fractionation and ion exchange chromatography followed by extensive dialysis against the buffer stated above. |
| Conjugation | Horseradish peroxidase(HRP) |

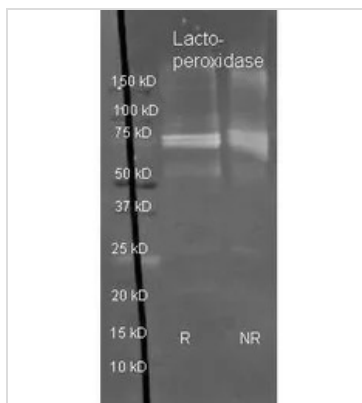


For full product information, images and publications, please visit our [website](#).

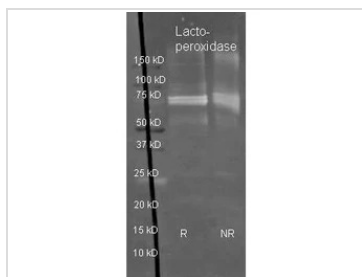
For laboratory research use only. Not for any clinical, therapeutic, or diagnostic use in humans or animals. Not for animal or human consumption.

Note

Purchasers shall not, and agree not to enable third parties to, analyze, copy, reverse engineer or otherwise attempt to determine the structure or sequence of the product.

DATA IMAGES

GTX40571 WB Image

Genetex Sheep anti Lactoperoxidase antibody was used to detect Lactoperoxidase under reducing (R) and non-reducing (NR) conditions. Reduced samples of purified target proteins contained 4% BME and were boiled for 5 minutes. Samples of ~1ug of protein per lane were run by SDS-PAGE. Protein was transferred to nitrocellulose and probed with 1:3000 dilution of primary antibody (ON 4 C).


GTX40571 WB Image

WB analysis of reduced (R) and non-reduced (NR) bovine lactoperoxidase protein using GTX40571 Lactoperoxidase antibody (HRP).

Loading : 1 µg

Dilution : 1:3000



For full product information, images and publications, please visit our [website](#).