

## 6X His tag antibody [AD1.1.10]

Cat. No. GTX40626

Host	Mouse
Clonality	Monoclonal
Isotype	IgG1
Application	WB, IP, ELISA
Reactivity	Species independent

Reference ( 1 )  
Package  
100 µg

## APPLICATION

## Application Note

\*Optimal dilutions/concentrations should be determined by the researcher.

Suggested dilution	Recommended dilution
WB	1/500-1/1,000
IP	Assay dependent
ELISA	Assay dependent

Not tested in other applications.

## PROPERTIES

Form	Liquid
Buffer	PBS
Preservative	0.09% Sodium azide
Storage	Store as concentrated solution. Centrifuge briefly prior to opening vial. For short-term storage (1-2 weeks), store at 4°C. For long-term storage, aliquot and store at -20°C or below. Avoid multiple freeze-thaw cycles.
Concentration	1.0 mg/ml (Please refer to the vial label for the specific concentration.)
Immunogen	PAX6 transcription factor linked to histidine tag.
Purification	Protein G purified From tissue culture supernatant
Conjugation	Unconjugated

## Note

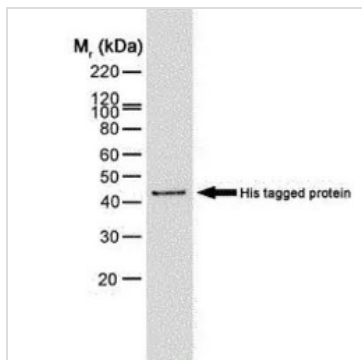
For laboratory research use only. Not for any clinical, therapeutic, or diagnostic use in humans or animals. Not for animal or human consumption.

Purchasers shall not, and agree not to enable third parties to, analyze, copy, reverse engineer or otherwise attempt to determine the structure or sequence of the product.



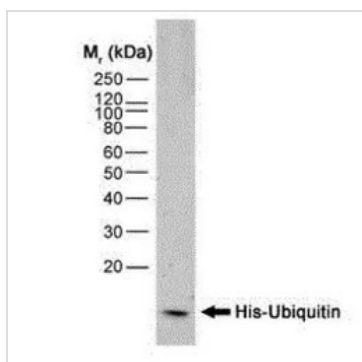
For full product information, images and publications, please visit our [website](#).

## DATA IMAGES



### GTX40626 WB Image

WB analysis of HIS tagged protein using GTX40626 6X His tag antibody [AD1.1.10].



### GTX40626 WB Image

WB analysis of His-tagged recombinant protein using GTX40626 6X His tag antibody [AD1.1.10].



For full product information, images and publications, please visit our [website](https://www.genetex.com).