

## GSK3 beta (phospho Ser9) antibody

Cat. No. GTX40875

Host	Rabbit
Clonality	Polyclonal
Isotype	IgG
Applications	WB
Reactivity	Rat

Package  
100 µl

## Applications

## Application Note

\*Optimal dilutions/concentrations should be determined by the researcher.

Suggested dilution	Recommended dilution
WB	1/1,000

**Note :** This antibody detects a band of approximately 46kDa in rat cortex cell lysates.

Not tested in other applications.

**Calculated MW** 47 kDa. ( [Note](#) )

## Properties

Form	Liquid
Buffer	10mM HEPES, 0.01% BSA, 50% Glycerol
Preservative	0.09% Sodium azide
Storage	Store as concentrated solution. Centrifuge briefly prior to opening vial. For short-term storage (1-2 weeks), store at 4°C. For long-term storage, aliquot and store at -20°C or below. Avoid multiple freeze-thaw cycles.
Concentration	Batch dependent (Please refer to the vial label for the specific concentration.)
Immunogen	Phosphopeptide corresponding to amino acid sequence surrounding phosphorylated serine 9 of rat GSK3 beta.
Purification	Purified by affinity chromatography
Conjugation	Unconjugated

## Note

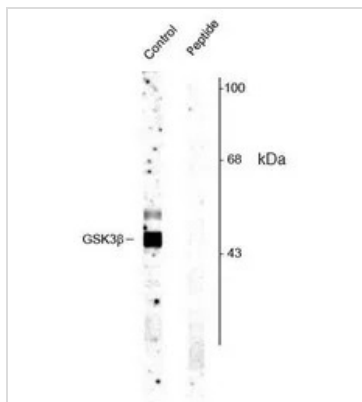
For laboratory research use only. Not for any clinical, therapeutic, or diagnostic use in humans or animals. Not for animal or human consumption.

Purchasers shall not, and agree not to enable third parties to, analyze, copy, reverse engineer or otherwise attempt to determine the structure or sequence of the product.



For full product information, images and publications, please visit our [website](#).

## DATA IMAGES



### GTX40875 WB Image

WB analysis of rat cortex tissue lysate using GTX40875 GSK3 beta (phospho Ser9) antibody.



For full product information, images and publications, please visit our [website](https://www.genetex.com).