

CXCL2 / GRO beta antibody

Cat. No. GTX40895

Host	Rabbit
Clonality	Polyclonal
Isotype	IgG
Applications	WB, IHC-P, ELISA, Functional Assay
Reactivity	Human

Package
100 µg

Applications

Application Note

*Optimal dilutions/concentrations should be determined by the researcher.

Suggested dilution	Recommended dilution
WB	0.1-0.2µg/ml
IHC-P	Assay dependent
ELISA	0.5µg/ml
Functional Assay	Assay dependent

Not tested in other applications.

Calculated MW 11 kDa. ([Note](#))

Properties

Form	Liquid
Buffer	PBS
Preservative	No preservatives
Storage	Store as concentrated solution. Centrifuge briefly prior to opening vial. For short-term storage (1-2 weeks), store at 4°C. For long-term storage, aliquot and store at -20°C or below. Avoid multiple freeze-thaw cycles.
Concentration	1.0 mg/ml (Please refer to the vial label for the specific concentration.)
Immunogen	Recombinant human GRO-beta.
Purification	Purified by affinity chromatography
Conjugation	Unconjugated

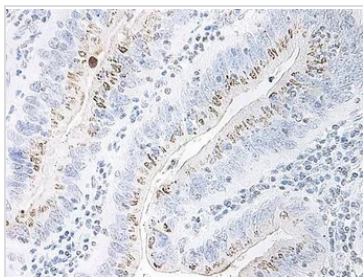
Note

For laboratory research use only. Not for any clinical, therapeutic, or diagnostic use in humans or animals. Not for animal or human consumption.

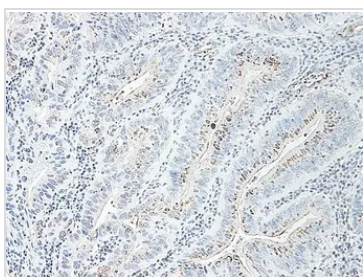
Purchasers shall not, and agree not to enable third parties to, analyze, copy, reverse engineer or otherwise attempt to determine the structure or sequence of the product.



For full product information, images and publications, please visit our [website](#).

DATA IMAGES

GTx40895 IHC-P Image

IHC-P analysis of human colorectal adenocarcinoma using GTx40895 CXCL2 / GRO beta antibody. Antigen retrieval using citrate buffer at pH6.0.


GTx40895 IHC-P Image

IHC-P analysis of human colorectal adenocarcinoma using GTx40895 CXCL2 / GRO beta antibody. Antigen retrieval using citrate buffer at pH6.0.



For full product information, images and publications, please visit our [website](#).