

Ly6g antibody [RB6-8C5]

Cat. No. GTX40913

Host	Rat
Clonality	Monoclonal
Isotype	IgG2b
Applications	WB, IHC-P, IHC-Fr, FCM, IP, Depletion
Reactivity	Mouse, Rat

References (18)

Package

250 µg

Applications

Application Note

*Optimal dilutions/concentrations should be determined by the researcher.

Suggested dilution	Recommended dilution
WB	Assay dependent
IHC-P	Assay dependent
IHC-Fr	Assay dependent
FCM	Assay dependent
IP	Assay dependent
Depletion	Assay dependent

Not tested in other applications.

Product Note

This antibody reacts predominantly with the Ly-6G protein but weaker reactivity with the Ly-6C protein has been reported (Fleming et al. 1993).

Properties

Form	Liquid
Buffer	Filter-sterilized PBS
Preservative	No preservatives
Storage	Store as concentrated solution. Centrifuge briefly prior to opening vial. Store at 4°C. DO NOT FREEZE.
Concentration	Batch dependent (Please refer to the vial label for the specific concentration.)
Immunogen	Normal murine bone marrow cells.
Purification	Protein G purified From tissue culture supernatant
Endotoxin	< 0.002 EU/µg (Determined by LAL assay)



For full product information, images and publications, please visit our [website](#).

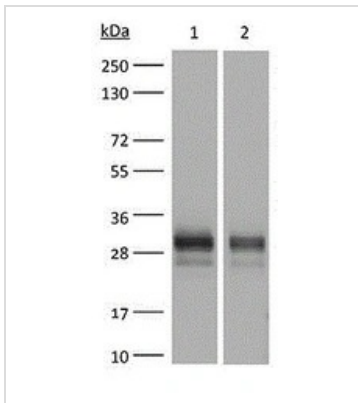
Conjugation

Unconjugated

Note

For laboratory research use only. Not for any clinical, therapeutic, or diagnostic use in humans or animals. Not for animal or human consumption.

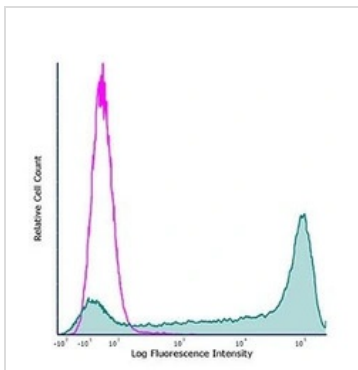
Purchasers shall not, and agree not to enable third parties to, analyze, copy, reverse engineer or otherwise attempt to determine the structure or sequence of the product.

DATA IMAGES

GTX40913 WB Image

WB analysis of recombinant mouse Ly6g using GTX40913 Ly6g antibody [RB6-8C5].

 Lane 1 : 1 μ g

 Lane 2 : 0.5 μ g

 Dilution: 15 μ g/mL

GTX40913 FCM Image

FCM analysis of mouse bone marrow cells using GTX40913 Ly6g antibody [RB6-8C5].

Filled histogram : Primary antibody

Open histogram: Isotype control


 For full product information, images and publications, please visit our [website](#).