

Glycine Receptor alpha 1/2 antibody, N-term

Cat. No. GTX40945

Host	Rabbit
Clonality	Polyclonal
Isotype	IgG
Applications	WB, IHC-Fr
Reactivity	Human, Mouse, Rat

Package
100 µg

Applications

Application Note

*Optimal dilutions/concentrations should be determined by the researcher.

Suggested dilution	Recommended dilution
WB	1/1,000
IHC-Fr	1/1,000

Note : This antibody detects a band of approximately 48 kDa in rat spinal cord lysates.

Not tested in other applications.

Product Note This antibody recognizes an epitope within the N-terminal region of glycine receptor alpha 1 and alpha 2.

Properties

Form	Liquid
Buffer	Ammonium Bicarbonate
Preservative	No preservatives
Storage	Store as concentrated solution. Centrifuge briefly prior to opening vial. For short-term storage (1-2 weeks), store at 4°C. For long-term storage, aliquot and store at -20°C or below. Avoid multiple freeze-thaw cycles.
Concentration	Batch dependent (Please refer to the vial label for the specific concentration.)
Immunogen	Synthetic peptide corresponding to the N-terminal region of rat glycine receptor alpha 1 subunit.
Purification	Purified by affinity chromatography
Conjugation	Unconjugated

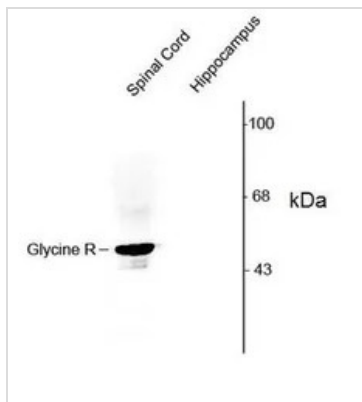
Note For laboratory research use only. Not for any clinical, therapeutic, or diagnostic use in humans or animals. Not for animal or human consumption.

Purchasers shall not, and agree not to enable third parties to, analyze, copy, reverse engineer or otherwise attempt to determine the structure or sequence of the product.



For full product information, images and publications, please visit our [website](#).

DATA IMAGES



GTx40945 WB Image

WB analysis of rat spinal cord and hippocampus tissue lysate using GTx40945 Glycine Receptor alpha 1/2 antibody, N-term.



For full product information, images and publications, please visit our [website](https://www.genetex.com).