

GFAP antibody [1B4]

Cat. No. GTX40996

Host	Mouse
Clonality	Monoclonal
Isotype	IgG2b
Application	WB, IHC-P, IHC-Fr, RIA
Reactivity	Human, Mouse, Rat, Rabbit, Sheep, Bovine, Dog, Chicken, Guinea pig, Pig

Reference (3)

Package

100 µg

APPLICATION

Application Note

*Optimal dilutions/concentrations should be determined by the researcher.

Suggested dilution	Recommended dilution
WB	Assay dependent
IHC-P	1/200-1/1,000
IHC-Fr	Assay dependent
RIA	Assay dependent

Note : This product requires protein digestion pre-treatment of paraffin sections e.g. trypsin or pronase.

Not tested in other applications.

Calculated MW 50 kDa. ([Note](#))

PROPERTIES

Form	Liquid
Buffer	PBS
Preservative	0.09% Sodium azide
Storage	Store as concentrated solution. Centrifuge briefly prior to opening vial. For short-term storage (1-2 weeks), store at 4°C. For long-term storage, aliquot and store at -20°C or below. Avoid multiple freeze-thaw cycles.
Concentration	1.0 mg/ml (Please refer to the vial label for the specific concentration.)
Immunogen	Bovine spinal cord homogenate.
Purification	Protein G purified From tissue culture supernatant
Conjugation	Unconjugated



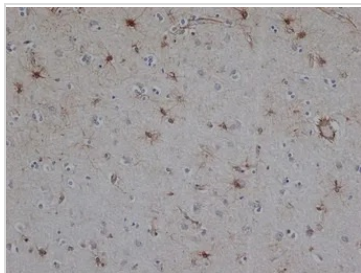
For full product information, images and publications, please visit our [website](#).

Note

For laboratory research use only. Not for any clinical, therapeutic, or diagnostic use in humans or animals. Not for animal or human consumption.

Purchasers shall not, and agree not to enable third parties to, analyze, copy, reverse engineer or otherwise attempt to determine the structure or sequence of the product.

DATA IMAGES



GTx40996 IHC-P Image

IHC-P analysis of human brain tissue using GTx40996 GFAP antibody. Enzyme mediated antigen retrieval using pronase.



For full product information, images and publications, please visit our [website](#).