

Sprouty 1 antibody, C-term

Cat. No. GTX41020

Host	Goat
Clonality	Polyclonal
Isotype	IgG
Applications	WB, ICC/IF, IHC-P, FCM
Reactivity	Human, Mouse

Package
100 µg

Applications

Application Note

*Optimal dilutions/concentrations should be determined by the researcher.

Suggested dilution	Recommended dilution
WB	1-3µg/ml
ICC/IF	10µg/ml
IHC-P	1-3µg/ml
FCM	Assay dependent

Note : Strong expression of the protein seen in the cytoplasm and Golgi apparatus of HeLa and HepG2 cells. This product has been successfully used Mouse Brain, showing nuclear staining.

Not tested in other applications.

Calculated MW 35 kDa. ([Note](#))

Properties

Form	Liquid
Buffer	TBS, 0.5% BSA
Preservative	0.02% Sodium azide
Storage	Store as concentrated solution. Centrifuge briefly prior to opening vial. For short-term storage (1-2 weeks), store at 4°C. For long-term storage, aliquot and store at -20°C or below. Avoid multiple freeze-thaw cycles.
Concentration	0.50 mg/ml (Please refer to the vial label for the specific concentration.)
Immunogen	Peptide with sequence CPSRGQGKPS, from the C Terminus of the protein sequence according to NP_005832.1; NP_955359.1.
Purification	Purified by ammonium sulphate precipitation followed by antigen affinity chromatography
Conjugation	Unconjugated



For full product information, images and publications, please visit our [website](#).

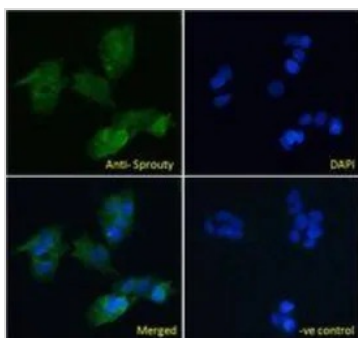
Date 2025 / 12 / 31 Page 1 of 2

For laboratory research use only. Not for any clinical, therapeutic, or diagnostic use in humans or animals. Not for animal or human consumption.

Note

Purchasers shall not, and agree not to enable third parties to, analyze, copy, reverse engineer or otherwise attempt to determine the structure or sequence of the product.

DATA IMAGES



GTX41020 ICC/IF Image

ICC/IF analysis of PFA fixed HepG2 cells using GTX41020 Sprouty 1 antibody, C-term.

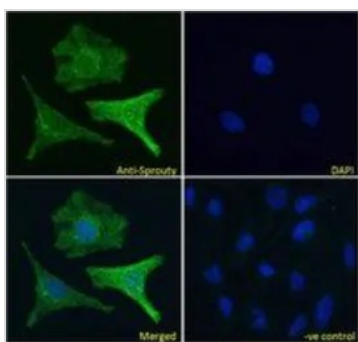
Green : Primary antibody

Blue : DAPI

Negative control : Unimmunized goat IgG

Permeabilization : 0.15% Triton

Dilution : 10µg/ml



GTX41020 ICC/IF Image

ICC/IF analysis of PFA fixed HeLa cells using GTX41020 Sprouty 1 antibody, C-term.

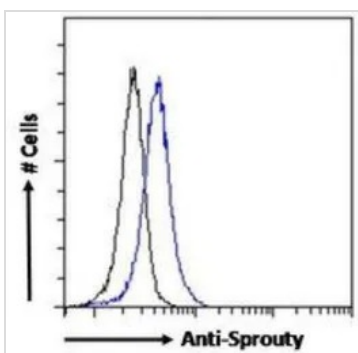
Green : Primary antibody

Blue : DAPI

Negative control : Unimmunized goat IgG

Permeabilization : 0.15% Triton

Dilution : 10µg/ml



GTX41020 FCM Image

FACS analysis of PFA fixed HEK293 cells using GTX41020 Sprouty 1 antibody, C-term.

Blue : Primary antibody

Black : Isotype control

Permeabilization : 0.5% Triton

Dilution : 10µg/ml



For full product information, images and publications, please visit our [website](#).