

Influenza B virus Nucleoprotein antibody [B267M]

Cat. No. GTX41036

Host	Mouse
Clonality	Monoclonal
Isotype	IgG1
Applications	WB, ELISA, Sandwich ELISA
Reactivity	Influenza B virus

Package
1 mg

Applications

Application Note

*Optimal dilutions/concentrations should be determined by the researcher.

Suggested dilution	Recommended dilution
WB	Assay dependent
ELISA	Assay dependent
Sandwich ELISA	Assay dependent

Note : Capture: GTX41040/GTX41032, Detection: GTX41036/GTX41025

Not tested in other applications.

Properties

Form	Liquid
Buffer	PBS
Preservative	0.09% Sodium azide
Storage	Store as concentrated solution. Centrifuge briefly prior to opening vial. Store at 4°C.
Concentration	6.20 mg/ml (Please refer to the vial label for the specific concentration.)
Immunogen	Purified Influenza virus type B.
Purification	Protein A purified
Conjugation	Unconjugated

Note

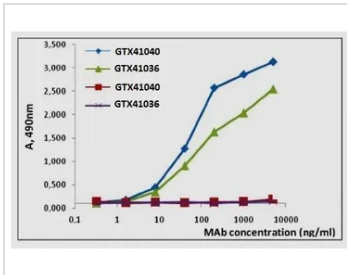
For laboratory research use only. Not for any clinical, therapeutic, or diagnostic use in humans or animals. Not for animal or human consumption.

Purchasers shall not, and agree not to enable third parties to, analyze, copy, reverse engineer or otherwise attempt to determine the structure or sequence of the product.



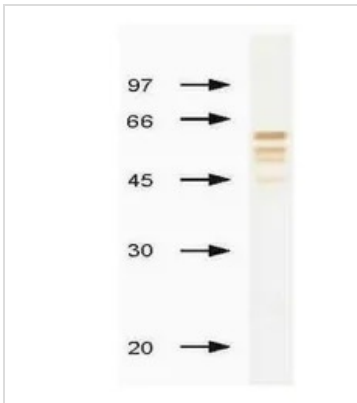
For full product information, images and publications, please visit our [website](#).

DATA IMAGES



GTX41036 ELISA Image

ELISA analysis of Influenza B virus (blue & green) and Influenza A virus mixture (red & purple) using GTX41040 Influenza B virus Nucleoprotein antibody [B265M] and GTX41036 Influenza B Virus Nucleoprotein antibody [B267M].



GTX41036 WB Image

WB analysis of NP of Influenza B virus using GTX41036 Influenza B Virus Nucleoprotein antibody [B267M] at 5 µg/mL.



For full product information, images and publications, please visit our [website](https://www.genetex.com).