

## Influenza B virus Nucleoprotein antibody [B265M]

Cat. No. GTX41040

Host	Mouse
Clonality	Monoclonal
Isotype	IgG2b
Applications	WB, ELISA, Sandwich ELISA
Reactivity	Influenza B virus

Package  
1 mg

## Applications

## Application Note

\*Optimal dilutions/concentrations should be determined by the researcher.

Suggested dilution	Recommended dilution
WB	Assay dependent
ELISA	Assay dependent
Sandwich ELISA	Assay dependent

**Note : Capture: GTX41040/GTX41032, Detection: GTX41036/GTX41025**

Not tested in other applications.

## Properties

Form	Liquid
Buffer	PBS
Preservative	0.09% Sodium azide
Storage	Store as concentrated solution. Centrifuge briefly prior to opening vial. Store at 4°C.
Concentration	4.40 mg/ml (Please refer to the vial label for the specific concentration.)
Immunogen	Purified influenza virus type B strain.
Purification	Protein A purified
Conjugation	Unconjugated

## Note

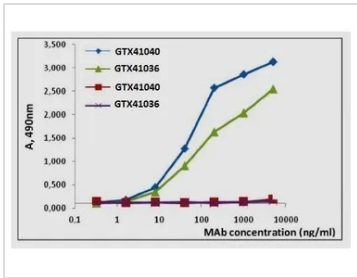
For laboratory research use only. Not for any clinical, therapeutic, or diagnostic use in humans or animals. Not for animal or human consumption.

Purchasers shall not, and agree not to enable third parties to, analyze, copy, reverse engineer or otherwise attempt to determine the structure or sequence of the product.



For full product information, images and publications, please visit our [website](#).

## DATA IMAGES



### GTX41040 ELISA Image

ELISA analysis of Influenza B virus (blue & green) and Influenza A virus mixture (red & purple) using GTX41040 Influenza B virus Nucleoprotein antibody [B265M] and GTX41036 Influenza B Virus Nucleoprotein antibody [B267M].



For full product information, images and publications, please visit our [website](https://www.genetex.com).