

Influenza B virus M1 (matrix protein) antibody [B276M]

Cat. No. GTX41044

Host	Mouse
Clonality	Monoclonal
Isotype	IgG1
Applications	WB, ELISA
Reactivity	Influenza B virus

References (1)

Package

500 µg

Applications

Application Note

*Optimal dilutions/concentrations should be determined by the researcher.

Suggested dilution	Recommended dilution
WB	Assay dependent
ELISA	Assay dependent

Not tested in other applications.

Properties

Form	Liquid
Buffer	PBS
Preservative	0.1% Sodium azide
Storage	Store as concentrated solution. Centrifuge briefly prior to opening vial. Store at 4°C.
Concentration	4.30 mg/ml (Please refer to the vial label for the specific concentration.)
Immunogen	Influenza B Virus derived from Allantoic fluid of 10 days old embryonated eggs.
Purification	Protein A purified
Conjugation	Unconjugated

Note

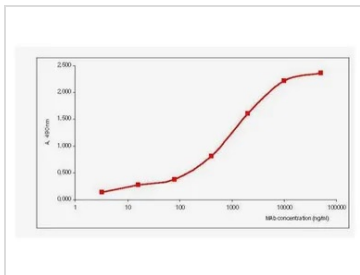
For laboratory research use only. Not for any clinical, therapeutic, or diagnostic use in humans or animals. Not for animal or human consumption.

Purchasers shall not, and agree not to enable third parties to, analyze, copy, reverse engineer or otherwise attempt to determine the structure or sequence of the product.



For full product information, images and publications, please visit our [website](#).

DATA IMAGES



GTX41044 ELISA Image

ELISA analysis of Influenza B virus (Influenza B/Tokyo/53/99, 0.5 µg/well) using GTX41044 Influenza B Virus (matrix protein M1) antibody [B276M].



For full product information, images and publications, please visit our [website](https://www.genetex.com).