

Factor VIII antibody [RFF-VIIIIC/8]

Cat. No. GTX41178

Host	Mouse
Clonality	Monoclonal
Isotype	IgG1
Applications	WB, ELISA, RIA
Reactivity	Human, Pig

Package
500 µg

Applications

Application Note

*Optimal dilutions/concentrations should be determined by the researcher.

Suggested dilution	Recommended dilution
WB	Assay dependent
ELISA	1/500-1/5,000
RIA	Assay dependent

Not tested in other applications.

Calculated MW 267 kDa. ([Note](#))

Product Note

This antibody recognizes an epitope towards the N-terminus of full-length Factor VIII. It also recognizes the 210kDa, 90kDa and 40kDa cleavage products. Clone RFF-VIIIIC/8 does not cross-react with von Willebrand factor.

Properties

Form	Liquid
Buffer	PBS
Preservative	0.09% Sodium azide
Storage	Store as concentrated solution. Centrifuge briefly prior to opening vial. For short-term storage (1-2 weeks), store at 4°C. For long-term storage, aliquot and store at -20°C or below. Avoid multiple freeze-thaw cycles.
Concentration	1.0 mg/ml (Please refer to the vial label for the specific concentration.)
Immunogen	Affinity purified human Factor VIII.
Purification	Protein G purified From tissue culture supernatant
Conjugation	Unconjugated

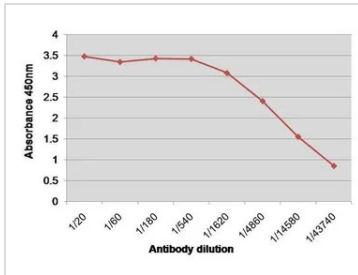


For full product information, images and publications, please visit our [website](#).

For laboratory research use only. Not for any clinical, therapeutic, or diagnostic use in humans or animals. Not for animal or human consumption.

Note

Purchasers shall not, and agree not to enable third parties to, analyze, copy, reverse engineer or otherwise attempt to determine the structure or sequence of the product.

DATA IMAGES

GTX41178 ELISA Image

ELISA analysis of Factor VIII recombinant protein using GTX41178 Factor VIII antibody [RFF-VIIIIC/8].



For full product information, images and publications, please visit our [website](https://www.genetex.com).