

## Factor VIII antibody [RFF-VIIIIC/10]

## Cat. No. GTX41190

<b>Host</b>	Mouse
<b>Clonality</b>	Monoclonal
<b>Isotype</b>	IgG1
<b>Applications</b>	WB, ELISA, RIA
<b>Reactivity</b>	Human

Package  
500 µg

## Applications

## Application Note

\*Optimal dilutions/concentrations should be determined by the researcher.

Suggested dilution	Recommended dilution
WB	1/100
ELISA	Assay dependent
RIA	Assay dependent

Not tested in other applications.

**Calculated MW** 267 kDa. ([Note](#))

**Product Note** This antibody recognizes an epitope within the non-functional, middle domain of full-length Factor VIII.

## Properties

<b>Form</b>	Liquid
<b>Buffer</b>	PBS
<b>Preservative</b>	0.09% Sodium azide
<b>Storage</b>	Store as concentrated solution. Centrifuge briefly prior to opening vial. For short-term storage (1-2 weeks), store at 4°C. For long-term storage, aliquot and store at -20°C or below. Avoid multiple freeze-thaw cycles.
<b>Concentration</b>	1.0 mg/ml (Please refer to the vial label for the specific concentration.)
<b>Immunogen</b>	Affinity purified human Factor VIII
<b>Purification</b>	Protein G purified From tissue culture supernatant
<b>Conjugation</b>	Unconjugated



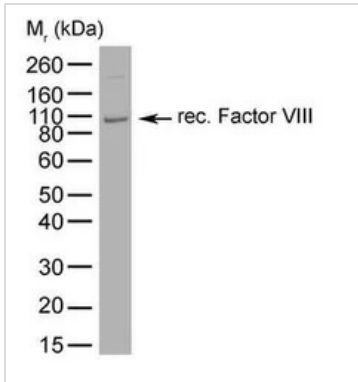
For full product information, images and publications, please visit our [website](#).

For laboratory research use only. Not for any clinical, therapeutic, or diagnostic use in humans or animals. Not for animal or human consumption.

**Note**

Purchasers shall not, and agree not to enable third parties to, analyze, copy, reverse engineer or otherwise attempt to determine the structure or sequence of the product.

## DATA IMAGES

**GTX41190 WB Image**

WB analysis of Factor VIII recombinant protein using GTX41190 Factor VIII antibody [RFF-VIIIIC/10].



For full product information, images and publications, please visit our [website](#).